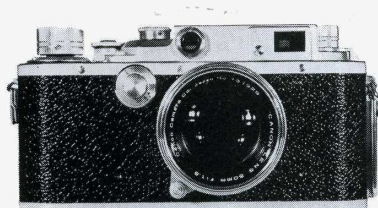
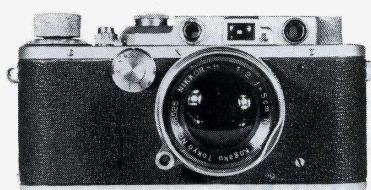


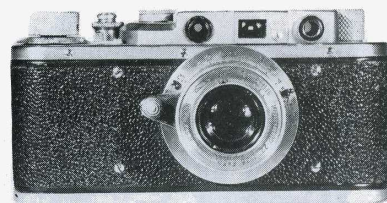
Leica II : dans la gamme Leitz, il fut le modèle le plus copié au monde.



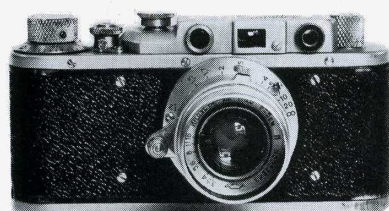
Copie japonaise de Canon.



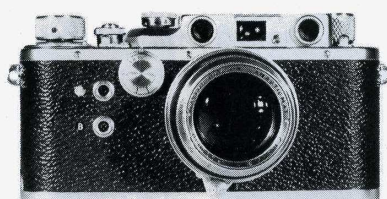
Copie japonaise de Nikon.



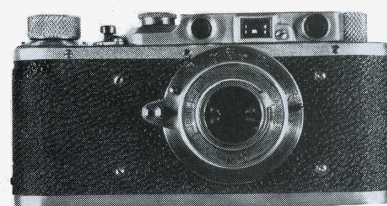
Copie russe de Zorki.



Copie japonaise de Leotax.



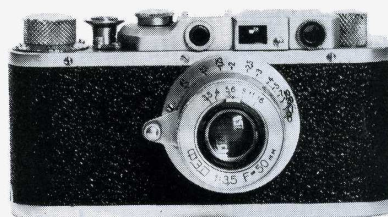
Copie anglaise de Taylor.



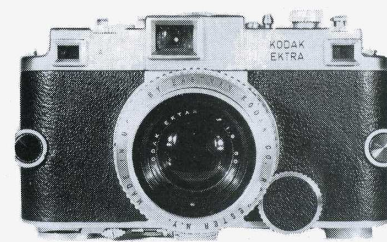
Copie russe « Leitz ».



Copie japonaise de Nikon.



Copie russe de Feschi.



Copie américaine de Kodak.