



*At the heart of the image*

# COOLPIX Digital Camera Lineup

Autumn & Winter 2005/2006



# COOLPIX cameras — all the enjoyment, all the quality

With the popular COOLPIX range, we strive to bring the joy of digital photography to everyone. Taking consumer opinions to heart, we continually expand the lineup to provide products in line with your needs. Working to refine functions and capabilities, we add enjoyment to the shooting experience. And with a history of optical excellence, we're renowned for delivering optimal quality.

Discover the enchantment at the heart of the image, with the COOLPIX lineup from Nikon.

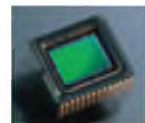


## Nikon technologies for more impressive images

Nikon expertise, craftsmanship and technologies make for much better pictures and a lot more fun – letting you achieve pin-sharp focus, accurate exposure and pleasing true-to-life color without complication. Below are just some of these superior technologies – making for clearer, more satisfying results and easier COOLPIX operation.

### High quality through superior craftsmanship

#### Digital excellence achieves true-to-life results



Sophisticated CCDs (Charge Coupled Devices) pack in ample megapixels, while image processing algorithms make better

use of color data to give you true-to-life color and sharp detail.

#### Better lenses for beautiful pictures

Crafted with high-level care and expertise, Nikkor lenses offer reliable autofocus, superior sharpness and unsurpassed optical performance to satisfy the most stringent photographic demands. Selected COOLPIX lenses also incorporate Nikkor ED glass, which offers further optimized clarity and superior color correction.

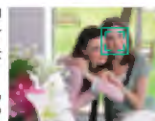


## Functions born of sheer innovation

### Autofocus that puts the person first

Conventional AF systems can achieve crisp focus, but it might not be where you want it – giving you sharp foreground objects, for example, while making people's faces unclear. Nikon's Face-priority AF, however, can automatically detect a face in the frame, ensuring a pleasing picture no matter where the subject is in the shot.

\* Face recognition capability may be limited in some shooting conditions.



### Better night portraits, with no more red-eye

In-Camera Red-Eye Fix can do away with the red-eye effect – detecting it in the image, then automatically correcting it in-camera to produce pleasing portraits in lower light.



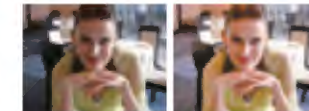
### Advanced Scene Modes give you closer control

Offering a choice of three effects, Advanced Scene Modes allow you to achieve a final image that more closely matches your own individual tastes, while conventional Scene Modes offer easy auto shooting in a wide range of situations.



### Add light and detail to darker images

If you've taken an image with not enough flash or too much back light, D-Lighting can automatically fix it. Creating a copy of the image in question, it adds light and detail where necessary while leaving other areas as they are.

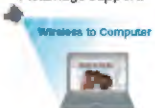


Without D-Lighting

With D-Lighting

### Wireless capability offers cable-free convenience

Wi-Fi LAN support adds fun and freedom to photography. Wireless transfer sends images from the memory card to a computer, on demand. Wireless shooting transfers each image to a computer as soon as it is shot. There's also wireless printing, which enables cable-free direct printing through wireless PictBridge support.



Wireless Printer Adapter FD 10 (optional)

## Compacts to complement your lifestyle

With versatile capabilities for diverse shooting situations, unique Nikon functions for more attractive results, and a selection of attractive body styles, it's no wonder the Nikon COOLPIX lineup has become popular the world over. In fact whatever your interests, whatever your individual style, whatever your needs, there's a Nikon COOLPIX that's just right for you.

### COOLPIX P1



p.6

- Built-in Wi-Fi LAN support (IEEE802.11b/g)
- 8.0 effective megapixels
- 3.5X Zoom-Nikkor lens
- 2.5-inch LCD monitor

### COOLPIX P2



p.6

- Built-in Wi-Fi LAN support (IEEE802.11b/g)
- 5.1 effective megapixels
- 3.5X Zoom-Nikkor lens
- 2.5-inch LCD monitor

### COOLPIX S1



p.8

- Ultra-slim body
- 5.1 effective megapixels
- 3X Zoom-Nikkor ED lens
- 2.5-inch LCD monitor

### COOLPIX S2



p.8

- "Splash proof" water resistance
- 5.1 effective megapixels
- 3X Zoom-Nikkor ED lens
- 2.5-inch LCD monitor

### COOLPIX S3



p.8

- Ultra-slim body
- 6.0 effective megapixels
- 3X Zoom-Nikkor ED lens
- 2.5-inch LCD monitor

### COOLPIX S4



p.10

- Dynamic swivel design
- 6.0 effective megapixels
- 10X Zoom-Nikkor lens
- 2.5-inch LCD monitor



### COOLPIX L1



p.11

- 6.2 effective megapixels
- 5X Zoom-Nikkor lens
- 2.5-inch LCD monitor

### COOLPIX 7900



p.12

- 7.1 effective megapixels
- 3X Zoom-Nikkor ED lens
- 2.0-inch LCD monitor

### COOLPIX 5900



p.12

- 5.1 effective megapixels
- 3X Zoom-Nikkor ED lens
- 2.0-inch LCD monitor

### COOLPIX 7600



p.13

- 7.1 effective megapixels
- 3X Zoom-Nikkor ED lens
- 1.8-inch LCD monitor

### COOLPIX 5600



p.14

- 5.1 effective megapixels
- 3X Zoom-Nikkor lens
- 1.8-inch LCD monitor

### COOLPIX 4600



p.14

- 4.0 effective megapixels
- 3X Zoom-Nikkor lens
- 1.8-inch LCD monitor



A higher level of performance, with an array of exceptional features and built-in wireless image transfer and printing



### The power of 8.0 megapixels; the freedom of 3.5x zoom

With 8.0 and 5.1 effective megapixels respectively, the COOLPIX P1 and COOLPIX P2 enable beautiful enlargements that leave plenty of room for creative cropping. They each feature a powerful 3.5x Zoom-Nikkor lens too, delivering 36-126mm\* performance and allowing macro shooting from as close as 4cm. \* 35mm equivalent



### A large, bright 2.5-inch LCD

Filling each of the camera backs, the large LCD lets users enjoy accurate previews of the framed shot, and play back recorded images right there on the spot.



### Aperture-priority Auto Mode gives you closer control

Offering 10-step manual control in increments of 1/3EV, Aperture-priority Auto Mode lets you throw backgrounds out of focus to emphasize your main subject, or make everything sharp up to the horizon, while the camera ensures optimal auto exposure.



### Wi-Fi delivers exciting new versatility

Groundbreaking built-in Wireless LAN support lets you send pictures to a computer without cables, either from the camera memory or as each shot is taken. It also supports wireless printing.



COOLPIX P1

COOLPIX P2



### Features that improve images in-camera

#### D-Lighting

D-Lighting rescues images with insufficient exposure. Just choose an image with insufficient flash or excessive back light, activate the D-Lighting function in Playback Mode, and the camera automatically creates a copy, but with light and detail added where necessary.

#### Portrait (Face AF)\*

Achieve a better class of portrait with the ingenious Portrait (Face AF) mode, which pinpoints a human face anywhere in your shot, then provides optimal focus on it automatically.

\* Face recognition capability may be limited in some shooting conditions.

#### In-Camera Red-Eye Fix

Use of flash can sometimes result in the annoying red-eye effect. Equipped with the In-Camera Red-Eye Fix function, however, the COOLPIX P1 and P2 can automatically detect the effect and correct it.

### Advanced Scene Modes

The COOLPIX P1 and P2 offer a range of Advanced Scene Modes that can produce images better suited to your tastes. There's an impressive array of 11 to choose from – each allowing you to select from three different imaging effects (Normal, Effect 1, Effect 2).

### Other important advantages

- 11 Advanced Scene Modes; 5 conventional Scene Modes
- Ample 32MB / 16MB internal memory (approx.)
- Blur Warning alerts users when camera shake occurs
- Movie shooting, with smooth 30fps performance in TV (640) mode
- Electronic VR (Vibration Reduction) compensates for camera shake
- Swift 1.2 sec. start-up; continuous shooting at up to 2.3fps
- Date Search function lets you find images fast
- PictureProject (included) with updated Wi-Fi capabilities
- GUI enables function selection by name or icon
- Handy HELP button gives easy explanations for main menu functions
- Noise Reduction for clearer Dusk/Dawn and Night landscape mode shots



The COOLPIX S1, S2 and S3 – combining high image quality and advanced functions with slim, attractive design

**Quality digital photography in an elegant aluminum body**



Embracing unique Nikon lens technology, the stylish COOLPIX S1, S2 and S3 are surprisingly slim. Crafted from aluminum, they impart a sense of resilient quality. And for shooting even when the weather's not so great, the COOLPIX S2 features an attractive "splash-proof" body\*.



\* The all-weather metal body of the COOLPIX S2 offers "splash proof" water resistance equivalent to IEC 60529 IPX4. It is not waterproof and should never be immersed in water.

**The advantage of a 2.5-inch LCD**

An easy-to-view monitor makes it easy to navigate menus, enables simple composition and allows image playback at right away after shooting.



**Shoot for higher quality, with a superior ED lens**

Embracing Nikon's "right-angled" optical system, the high-quality ED\* lenses function throughout their ample ranges without ever protruding from the camera body.

\* Nikon's ED (Extra-low Dispersion) glass offers superior sharpness and optimal color correction.



**Features that improve images in-camera**

**D-Lighting**

Offering a level of ingenuity that rivals their distinctive style, the COOLPIX S1, S2 and S3 offer D-Lighting to improve underexposed images in-camera, which automatically adds light and detail to images as needed.

**Face-priority AF\***

The Face-priority AF function achieves pin-sharp portraits. Accessible in Portrait Mode, it automatically detects human faces in the frame and achieves optimal focus accordingly.

\* Face recognition capability may be limited in some shooting conditions.

**In-Camera Red-Eye Fix**

With designs suited to social gatherings, pleasing flash performance is essential. That's why the COOLPIX S1, S2 and S3 feature In-Camera Red-Eye Fix, which automatically detects, then corrects the red-eye effect.

COOLPIX S1 COOLPIX S2 COOLPIX S3



**Other important advantages**

- 17 / 16 / 17 Scene Modes; 4 with Scene Assist
- Includes Underwater Scene Mode†
- Weighs just 118g; lightest of the COOLPIX lineup‡
- Slim, stylish and highly portable
- 12MB of internal memory (approx.)
- Choice of GUI (Graphic User Interface) selection by name or icon
- HELP button gives easy-to-understand function explanations
- Up to 200 / 190 / 190 shots with one Rechargeable Battery EN-EL8‡
- Records movies with sound at 15fps
- Handy Voice Recording Mode
- Speedy start-up in just one second (approx.)
- Continuous shooting at up to 1.8 / 1.8 / 1.6fps (approx.)
- BSS (Best Shot Selector) saves the sharpest shot from a series
- Blur Warning alerts users of camera shake

\* S1 and S3 only, for use with optional Waterproof Case WP-CP5  
 † S1 and S3 only  
 ‡ Based on CIPA industry standard for measuring life of camera batteries. Measured at 25°C (77°F); zoom adjusted with each shot, built-in flash fired with every other shot, image mode set to Normal.

**A choice of color to suit your style**

Surprisingly slim and stylish, the COOLPIX S1 and COOLPIX S3 are also available in a range of appealing colors.

- COOLPIX S1: Pure silver, Ebony black, Ivory white
- COOLPIX S3: Platinum silver, Ivory white, Matte black

Note: Available colors may differ by country or area.

Wide-ranging 10x zoom gives you further freedom, while a dynamic swivel design lets you cover all the angles



### Powerful 10x zoom performance

The COOLPIX S4 packs a high-quality 10x Zoom-Nikkor lens. Offering extended 38mm medium-wide through 380mm telephoto (35mm equivalent) performance, it's great for all kinds of shots from close portraits to expansive scenery and lets you make the most of powerful 6.0 effective megapixel performance.



### Dynamic swivel design for more imaginative shooting

The unique swivel design gives the photographer the freedom to take pictures from much more imaginative angles – shooting from overhead, from the hip, or pointing the lens and LCD monitor in the same direction for self-portraits.



### Smooth, simple operation

The Graphic User Interface (GUI) lets you choose functions by name or icon. There's a handy HELP button too, which displays simple explanations for main menu functions.



### Features that improve images in-camera

#### D-Lighting

When an image is compromised by excessive back light or insufficient flash, the COOLPIX S4 has got it covered. Just select the image, opt for D-Lighting and the camera automatically creates a copy, but with light and detail added where necessary.

#### Face-priority AF\*

The Face-priority AF function can detect a human face, no matter where it is located in the frame – producing pleasingly sharp portraits, more of the time.

\* Face recognition capability may be limited in some shooting conditions.

#### In-Camera Red-Eye Fix

The In-Camera Red-Eye Fix function is incredibly useful. Automatically detecting then correcting the red-eye effect sometimes caused by flash, it produces more flattering results in fading light.

### Other important advantages

- 16 Scene Modes; 4 with Scene Assist
- Blur Warning alerts users of camera shake
- Easy to carry; easy to operate
- 13.5MB of internal memory (approx.)
- GUI (Graphic User Interface) offers function selection by name or icon
- HELP button displays easy-to-understand function explanations
- Compatible with AA-size batteries
- Handy Voice Recording Mod.
- BSS (Best Shot Selector) saves the sharpest shot from a series
- AE-BSS selects the best relative exposure from a series of shots
- Takes up to 230 shots with EN-MH1-B2 Rechargeable Battery\*
- Records movies with sound
- Continuous shooting at up to 1.3fps (approx.)

\* Based on CIPA industry standard for measuring life of camera batteries. Measured at 25°C (77°F); zoom adjusted with each shot, but in flash fired with every other shot, image mode set to Normal.

### The clarity of 6.2 effective megapixels

The imaging performance of 6.2 effective megapixels delivers higher quality you can recognize at a glance. It also allows pictures to stay sharp when significantly enlarged and makes for more creative cropping.



### Expansive 5x zoom performance

A versatile 5x Zoom-Nikkor 38-190mm (35mm equivalent) lens gives you great compositional freedom – letting you capture everything from closely composed portraits to wide-open landscapes.



### Easy composition and playback with a 2.5-inch LCD

The bright 2.5-inch LCD monitor not only makes for comfortable composition, but also makes it easy to play back results on the spot.



Delivering smarter, sharper shooting within compact, highly portable dimensions



COOLPIX L101  
Available in selected market only.

### Features that improve images in-camera

#### D-Lighting

If you've taken a picture that's too dark in places, D-Lighting can fix the image in-camera – automatically adding light and detail to dark areas while keeping brighter parts just as they are.

#### Face-priority AF\*

With some cameras, other objects can come out clearer than the person you're trying to photograph. Face-priority AF, on the other hand, can find a face wherever it is in the frame to put the focus right where you want it.

\* Face recognition capability may be limited in some shooting conditions.

#### In-Camera Red-Eye Fix

The COOLPIX L1 gives you better pictures of people in low light. That's because it features In-Camera Red-Eye Fix, which automatically corrects the annoying red-eye effect caused by flash.

### Other important advantages

- 15 Scene Modes; 4 with Scene Assist
- Blur Warning alerts users of camera shake
- Compact, easy-to-carry dimensions
- Multi-selector button for easy operation
- 10MB of internal memory (approx.)
- GUI (Graphic User Interface) enables function selection by name or icon
- HELP button displays easy-to-understand function explanations
- Compatible with AA-size batteries
- BSS (Best Shot Selector) saves the sharpest shot from a series
- Takes up to 230 shots with EN-MH1-B2 Rechargeable Battery\*
- Records movies with sound
- Continuous shooting at up to 0.7fps (approx.)

\* Based on CIPA industry standard for measuring life of camera batteries. Measured at 25°C (77°F); zoom adjusted with each shot, but in flash fired with every other shot, image mode set to Normal.



COOLPIX 7900

COOLPIX 5900

Make the very most of the moment with quality performance and simple operation



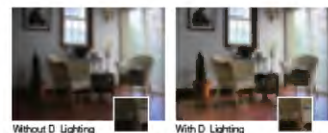
COOLPIX 7600

Get great looking pictures more of the time, with high-level clarity and a choice of clever functions



**D-Lighting improves underexposed images**

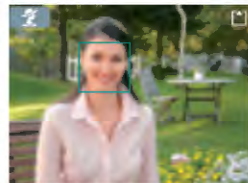
Nikon's innovative D-Lighting function lets you improve images taken with insufficient flash or excessive back light. Select the function in Playback Mode and the camera automatically creates a copy with light and detail added where necessary.



**Face-priority AF\* gives you sharper portraits**

Face-priority AF assists you in achieving sharper portraits. Selectable in Portrait Mode, it detects the presence of a human face, wherever it is in the frame, then provides optimal focus accordingly.

\* Face recognition capability may be limited in some shooting conditions.



**Multi-area AF gives a sharper kind of freedom**

With 99 selectable areas, Multi-area Auto Focus lets you locate your subject almost anywhere in the frame and still achieve exceptional clarity. It also provides pin-sharp focus for multiple subjects.



**Say goodbye to red-eye**

In-Camera Red-Eye Fix helps to eradicate the annoying red-eye effect that can occur with flash photography automatically detecting it and correcting it to give you better shots in lower light.



**Other important advantages**

- 16 Scene Modes; 4 with Scene Assist
- GUI enables function selection by name or icon
- Shoots smooth 30fps VGA-size movies with sound
- Electronic VR (Vibration Reduction) adds stability to movie shooting
- 13.5MB (approx.) of internal memory
- Continuous shooting at up to approx. 1.7fps
- Handy HELP button provides simple function explanations
- Takes up to 220/270 shots (approx.) with Rechargeable Li-ion Battery EN-EL5\*

\* Based on CIPA industry standard for measuring life of camera batteries. Measured at 25°C (77°F); zoom adjusted with each shot, built-in flash fired with every other shot, image mode set to Normal.

**Clearer results with a quality 3x Zoom-Nikkor ED lens**

With a powerful 3x Zoom-Nikkor ED\* lens delivering 38-114mm (35mm equivalent) performance, you can compose as you like and count on sharp results.

\* Nikon's ED (Extra-low Dispersion) glass offers superior sharpness and optimal color correction.



**Face-priority AF\* puts the focus where you want it**

Nikon's useful Face-priority AF function can find a human face in the frame. Selectable in Portrait Mode, it provides optimal auto focus, no matter where the subject is located in the shot.

\* Face recognition capability may be limited in some shooting conditions.



**D-Lighting adds light and detail**

D-Lighting is great for rescuing images taken with unsatisfactory exposure – creating a copy of the image automatically, then adding extra light and detail in areas where needed.



**Take better portraits at night**

In-Camera Red-Eye Fix helps you avoid the red-eye effect that can occur with a flash – automatically detecting, then correcting the effect to give you the results you want.

**Other important advantages**

- 16 Scene Modes, 4 with Scene Assist
- User-friendly operation
- Blur Warning alerts the user to camera shake
- Easy-to-understand interface lets users choose functions by name or icon
- Handy HELP button displays simple function explanations
- Compact dimensions with a well-designed grip
- 5 movie modes with sound for up to 30fps shooting
- Electronic VR (Vibration Reduction) makes movies more stable
- Takes up to 100 shots (approx.) with two AA-size batteries\*
- 14MB (approx.) internal memory
- PictBridge compatibility for direct printing without a computer

\* Based on CIPA industry standard for measuring life of camera batteries. Measured at 25°C (77°F); zoom adjusted with each shot, built-in flash fired with every other shot, image mode set to Normal.



PictureProject adds versatility and user-friendly enjoyment to your photography. Provided as a complimentary accessory with all COOLPIX cameras, this powerful software lets you import, edit and organize images with ease, then share the enjoyment with exciting options.

## Digital quality and enjoyment, for all generations



### D-Lighting adds light and detail where necessary

With the COOLPIX 5600/4600, anyone can produce pictures with great exposure. Just select a picture with unattractive exposure and opt for D-Lighting. The camera then creates a copy, but with light and detail improved automatically.



Without D-Lighting

With D-Lighting

### Get rid of red eyes, in-camera

Nikon's In-Camera Red-Eye Fix can automatically detect, then correct the effect to give you better results, more of the time.



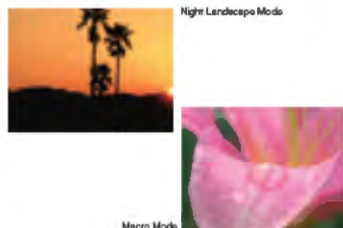
### Exceptionally easy operation

A Graphic User Interface (GUI) that lets you choose functions by name or icon makes operation exceptionally easy, while just a press of the handy HELP button displays simple-to-understand explanations for functions on the main menu.



### A broad choice of Scene Modes

An ample selection of Scene Modes makes it easy to take pictures you can be proud of. Just select the best suited to the scene at hand for fully automated shooting that gives you great results.



Night Landscape Mode

Macro Mode

### Other important advantages

- 16 Scene Modes; 4 featuring Scene Assist
- Easy to operate; fun to use
- Up to 300 / 340 shots (approx.) with two EN-MH1 rechargeable batteries\*
- Blur Warning alerts the user of camera shake
- High-density design achieves truly compact dimensions
- Underwater Scene Mod.
- 14MB of internal memory; SD card compatibility
- Choice of three movie modes\*\*

\* Based on CIPA industry standard for measuring 1/6 of camera battery life. Measured at 23°C (73°F); 20min. adjusted with each shot, built-in flash fired with every other shot, image mode set to Normal.

\*\* E5600: with sound; E4600: without sound.

## Starting off

### • Easy transfer to computer



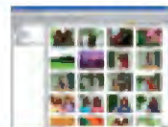
All images can be sent from the camera's memory as soon as it's connected, or displayed as thumbnails for more selective importing.

### • Slideshows and viewing versatility

View images as thumbnails or as large as you like. Create slideshows with special effects and your favorite music.



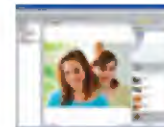
### • Simple to search, easy to organize



Find photos by name, keyword, date or even multiple criteria, and organize images any way you like, with easy drag and drop operation.

## Stepping up

### • Picture editing at a touch



Correct red-eye, brightness and color with just one touch of a button. Or return to the unchanged image with the handy Reset button.

### • Wide-ranging digital filters



Without filter

With filter

Transform images after shooting with optional nik Color Efex. Comprising a wide range of filters, they let you achieve results more closely matching your desires.

### • Create movies; burn DVDs

Optional DVD show lets you combine stills and images in a choice of styles with your own music and titles to produce muvee videos for saving in DVD or video CD format.



## Finishing off

### • Print it the way you want it

Handy templates make photo printing simple—offering easy-to-select functions, such as borderless print and a variety of layout options.



### • Other options for sharing



Other useful templates make it easy to attach photos to email, adjust file sizes, and burn your images to disc.

### PictureProject System Requirements

OS	Macintosh: Mac OS X version 10.1.5 or later (version 10.2.8 or later required for Burn Disc option) / Windows: Windows® XP Home Edition/Professional / Windows® 2000 Professional / Windows® Me / Windows® 98SE pro. install models
RAM	Macintosh: 64MB or more recommended / Windows: 64MB or more recommended (128MB with muvee option)
Hard disk	60MB required for installation
Display	800 x 600 or more with 16 bit color (full color recommended)
Others	CD-ROM drive required for installation. Only built-in USB ports are supported.

Specifications and equipment are subject to change without any notice or obligation on the part of the manufacturer.

Note: DVD show is available for Windows only; requires PictureProject 1.5 or later; muvee is powered by muvee Technologies.



# Specifications

	COOLPIX P1	COOLPIX P2	COOLPIX S1	COOLPIX S2	COOLPIX S3	COOLPIX S4	COOLPIX L1/L101	COOLPIX 7900	COOLPIX 5900	COOLPIX 7600	COOLPIX 5600	COOLPIX 4600		
Effective pixels	8.0 million	5.1 million	5.1 million	5.1 million	6.0 million	6.0 million	6.2 million	7.1 million	5.1 million	7.1 million	5.1 million	4.0 million		
CCD	1/1.8 inch type (8.31 million total pixels)	1/1.8 inch type (5.26 million total pixels)	1/2.5 inch type (5.36 million total pixels)	1/2.5 inch type (5.36 million total pixels)	1/2.5 inch type (6.4 million total pixels)	1/2.5 inch type (6.4 million total pixels)	1/2.5 inch type (6.37 million total pixels)	1/1.8 inch type (7.41 million total pixels)	1/1.8 inch type (5.26 million total pixels)	1/1.8 inch type (7.41 million total pixels)	1/2.5 inch type (5.26 million total pixels)	1/2.5 inch type (4.23 million total pixels)		
Image modes	NM (26AE), 3M (26AE), 3M (26AD), 2M (60D), 1M (26D), TV (84D), TV (84E), 2:2 (26AE)	NM (26AE), 3M (26AE), 3M (60D), 1M (26D), PC (162E), TV (84E), 2:2 (26AE)	High (25AE)*, Normal (25AE), Normal (26AE), PC (162E), TV (84E)	High (25AE)*, Normal (25AE), Normal (26AE), PC (162E), TV (84E)	High (26AE)*, Normal (26AE), Normal (26AE), PC (162E), TV (84E)	High (26AE)*, Normal (26AE), Economy (26AE), PC (162E), TV (84E)	High (26AE)*, Normal (26AE), Normal (26AE), PC (162E), TV (84E)	1M (207E x 26AE), 5M (26AE x 184A), 3M (26AE), PC (162E), TV (84E)	5M (26AE x 84A), 3M (26AE), 2M (160E), PC (162E), TV (84E)	5M (26AE x 84A), 3M (26AE), 2M (160E), PC (162E), TV (84E)	High (26AE)*, Normal (26AE), Normal (26AE), PC (162E), TV (84E)	High (26AE)*, Normal (26AE), Normal (26AE), PC (162E), TV (84E)	High (26AE)*, Normal (26AE), Normal (26AE), PC (162E), TV (84E)	
Lens	3x Zoom Nikkor ED; 5.8 28 3mm (25mm [13x] format equivalent to 38.28mm); 1/2.5 5.2; 7 elements in 6 groups; Digital zoom: up to 4x	3x Zoom Nikkor ED; 5.8 28 3mm (25mm [13x] format equivalent to 38.28mm); 1/2.5 5.2; 7 elements in 6 groups; Digital zoom: up to 4x	2x Zoom Nikkor ED; 5.8 17 4mm (15mm [1.3x] format equivalent to 25.10mm); 1/2.0 5.4; 12 elements in 10 groups; Digital zoom: up to 4x	2x Zoom Nikkor ED; 5.8 17 4mm (15mm [1.3x] format equivalent to 25.10mm); 1/2.0 5.4; 12 elements in 10 groups; Digital zoom: up to 4x	2x Zoom Nikkor ED; 5.8 17 4mm (15mm [1.3x] format equivalent to 25.10mm); 1/2.0 5.4; 12 elements in 10 groups; Digital zoom: up to 4x	2x Zoom Nikkor ED; 5.8 17 4mm (15mm [1.3x] format equivalent to 25.10mm); 1/2.0 5.4; 12 elements in 10 groups; Digital zoom: up to 4x	2x Zoom Nikkor ED; 5.8 17 4mm (15mm [1.3x] format equivalent to 25.10mm); 1/2.0 5.4; 12 elements in 10 groups; Digital zoom: up to 4x	2x Zoom Nikkor ED; 7.8 23 4mm (25mm [13x] format equivalent to 38.28mm); 1/2.8 4.7; 7 elements in 6 groups; Digital zoom: up to 4x	2x Zoom Nikkor ED; 7.8 23 4mm (25mm [13x] format equivalent to 38.28mm); 1/2.8 4.7; 7 elements in 6 groups; Digital zoom: up to 4x	2x Zoom Nikkor ED; 7.8 23 4mm (25mm [13x] format equivalent to 38.28mm); 1/2.8 4.7; 7 elements in 6 groups; Digital zoom: up to 4x	2x Zoom Nikkor ED; 7.8 23 4mm (25mm [13x] format equivalent to 38.28mm); 1/2.8 4.7; 7 elements in 6 groups; Digital zoom: up to 4x	2x Zoom Nikkor ED; 7.8 23 4mm (25mm [13x] format equivalent to 38.28mm); 1/2.8 4.7; 7 elements in 6 groups; Digital zoom: up to 4x	2x Zoom Nikkor ED; 7.8 23 4mm (25mm [13x] format equivalent to 38.28mm); 1/2.8 4.7; 7 elements in 6 groups; Digital zoom: up to 4x	
Focus range	50cm (19.6 in.) to infinity (∞), 4cm (1.6 in.) to infinity (∞) in Macro Mode	50cm (19.6 in.) to infinity (∞), 4cm (1.6 in.) to infinity (∞) in Macro Mode	20cm (12 in.) to infinity (∞), 4cm (1.6 in.) to infinity (∞) in Macro Mode	20cm (12 in.) to infinity (∞), 4cm (1.6 in.) to infinity (∞) in Macro Mode	20cm (12 in.) to infinity (∞), 4cm (1.6 in.) to infinity (∞) in Macro Mode	20cm (12 in.) to infinity (∞), 4cm (1.6 in.) to infinity (∞) in Macro Mode	20cm (12 in.) to infinity (∞), 4cm (1.6 in.) to infinity (∞) in Macro Mode	Approx. 20cm (12 in.) to infinity (∞), 4cm (1.6 in.) to infinity (∞) in Macro Mode	Approx. 20cm (12 in.) to infinity (∞), 4cm (1.6 in.) to infinity (∞) in Macro Mode	Approx. 20cm (12 in.) to infinity (∞), 4cm (1.6 in.) to infinity (∞) in Macro Mode	Approx. 20cm (12 in.) to infinity (∞), 4cm (1.6 in.) to infinity (∞) in Macro Mode	Approx. 20cm (12 in.) to infinity (∞), 4cm (1.6 in.) to infinity (∞) in Macro Mode	Approx. 20cm (12 in.) to infinity (∞), 4cm (1.6 in.) to infinity (∞) in Macro Mode	
LCD monitor	2.5 inch type, 110,000 dot TFT LCD monitor with brightness adjustment	2.5 inch type, 110,000 dot TFT LCD monitor with brightness adjustment	2.5 inch type, 110,000 dot TFT LCD monitor with brightness adjustment	2.5 inch type, 110,000 dot TFT LCD monitor with brightness adjustment	2.5 inch type, 110,000 dot TFT LCD monitor with brightness adjustment	2.5 inch type, 110,000 dot TFT LCD monitor with brightness adjustment	2.5 inch type, 110,000 dot TFT LCD monitor with brightness adjustment	2.0 inch type, 110,000 dot TFT LCD monitor with brightness adjustment	2.0 inch type, 110,000 dot TFT LCD monitor with brightness adjustment	1.8 inch type, 80,000 dot TFT LCD monitor with brightness adjustment	1.8 inch type, 80,000 dot TFT LCD monitor with brightness adjustment	1.8 inch type, 80,000 dot TFT LCD monitor with brightness adjustment	1.8 inch type, 80,000 dot TFT LCD monitor with brightness adjustment	
Storage media	Internal memory (approx. 22MB), SD memory card	Internal memory (approx. 10MB), SD memory card	Internal memory (approx. 12MB), SD memory card	Internal memory (approx. 12MB), SD memory card	Internal memory (approx. 12MB), SD memory card	Internal memory (approx. 12MB), SD memory card	Internal memory (approx. 10MB), SD memory card	Internal memory (approx. 13 MB), SD memory card	Internal memory (approx. 13 MB), SD memory card	Internal memory (approx. 14MB), SD memory card	Internal memory (approx. 14MB), SD memory card	Internal memory (approx. 14MB), SD memory card	Internal memory (approx. 14MB), SD memory card	
Shooting modes	Auto, Programmed Auto, Aperture priority Auto, Mode Select, Scene (Panorama assist, Beach/Slow, Museum, Copy, Sports), Advanced Scene (Pet cat, Face AF, Portrait, Party/Indoor, Night portrait, Landscape, Night landscape, Sunset, Dark/Dawn, Fireworks show, Back light, Close up), Voice Recording, BSS (Best Shot Selector), Blur Warning, Date Imprint, Self timer (10 sec.)	Auto, Programmed Auto, Aperture priority Auto, Mode Select, Scene (Panorama assist, Beach/Slow, Museum, Copy, Sports), Advanced Scene (Pet cat, Face AF, Portrait, Party/Indoor, Night portrait, Landscape, Night landscape, Sunset, Dark/Dawn, Fireworks show, Back light, Close up), Voice Recording, BSS (Best Shot Selector), Blur Warning, Date Imprint, Self timer (3, 10 sec.)	Auto, Scene Assist (Portrait, Landscape, Sports, Night portrait), Scene (Party/Indoor, Beach/Slow, Sunset, Dark/Dawn, Night landscape, Close up, Museum, Fireworks show, Copy, Back light, Panorama assist, Underwater, Voice Recording), Color Options, BSS (Best Shot Selector), Blur Warning, Date Imprint, Self timer (10 sec.) Note: Underwater mode is only available with COOLPIX S1 and COOLPIX S3	Auto, Scene Assist (Portrait, Landscape, Sports, Night portrait), Scene (Party/Indoor, Beach/Slow, Sunset, Dark/Dawn, Night landscape, Close up, Museum, Fireworks show, Copy, Back light, Panorama assist, Voice Recording), BSS (Best Shot Selector), Blur Warning, Date Imprint, Self timer (10 sec.)	Auto, Scene Assist (Portrait, Landscape, Sports, Night portrait), Scene (Party/Indoor, Beach/Slow, Sunset, Dark/Dawn, Night landscape, Close up, Museum, Fireworks show, Copy, Back light, Panorama assist, Voice Recording), BSS (Best Shot Selector), Blur Warning, Date Imprint, Self timer (10 sec.)	Auto, Scene Assist (Portrait, Landscape, Sports, Night portrait), Scene (Party/Indoor, Beach/Slow, Sunset, Dark/Dawn, Night landscape, Close up, Museum, Fireworks show, Copy, Back light, Panorama assist, Voice Recording), BSS (Best Shot Selector), Blur Warning, Date Imprint, Self timer (10 sec.)	Auto, Scene Assist (Portrait, Landscape, Sports, Night portrait), Scene (Party/Indoor, Beach/Slow, Sunset, Dark/Dawn, Night landscape, Close up, Museum, Fireworks show, Copy, Back light, Panorama assist, Voice Recording), BSS (Best Shot Selector), Blur Warning, Date Imprint, Self timer (10 sec.)	Auto, Scene Assist (Portrait, Landscape, Sports, Night portrait), Scene (Party/Indoor, Beach/Slow, Sunset, Dark/Dawn, Night landscape, Close up, Museum, Fireworks show, Copy, Back light, Panorama assist, Voice Recording), BSS (Best Shot Selector), Blur Warning, Date Imprint, Date counter, Self timer (10 sec.)	Auto, Scene Assist (Portrait, Landscape, Sports, Night portrait), Scene (Party/Indoor, Beach/Slow, Sunset, Dark/Dawn, Night landscape, Close up, Museum, Fireworks show, Copy, Back light, Panorama assist, Voice Recording), BSS (Best Shot Selector), Blur Warning, Date Imprint, Date counter, Self timer (10 sec.)	Auto, Scene Assist (Portrait, Landscape, Sports, Night portrait), Scene (Party/Indoor, Beach/Slow, Sunset, Dark/Dawn, Night landscape, Close up, Museum, Fireworks show, Copy, Back light, Panorama assist, Voice Recording), BSS (Best Shot Selector), Blur Warning, Date Imprint, Date counter, Self timer (10 sec.)	Auto, Scene Assist (Portrait, Landscape, Sports, Night portrait), Scene (Party/Indoor, Beach/Slow, Sunset, Dark/Dawn, Night landscape, Close up, Museum, Fireworks show, Copy, Back light, Panorama assist, Voice Recording), BSS (Best Shot Selector), Blur Warning, Date Imprint, Date counter, Self timer (10 sec.)	Auto, Scene Assist (Portrait, Landscape, Sports, Night portrait), Scene (Party/Indoor, Beach/Slow, Sunset, Dark/Dawn, Night landscape, Close up, Museum, Fireworks show, Copy, Back light, Panorama assist, Voice Recording), BSS (Best Shot Selector), Blur Warning, Date Imprint, Date counter, Self timer (10 sec.)	Auto, Scene Assist (Portrait, Landscape, Sports, Night portrait), Scene (Party/Indoor, Beach/Slow, Sunset, Dark/Dawn, Night landscape, Close up, Museum, Fireworks show, Copy, Back light, Panorama assist, Voice Recording), BSS (Best Shot Selector), Blur Warning, Date Imprint, Date counter, Self timer (10 sec.)	
Movie	With sound: TV movie (640*) at 30fps, TV movie (640) at 15fps, Small size (320) at 15fps, Smaller size (160) at 15fps, Super movie (250) at 30fps, Super movie at 15fps; Without sound: Time lapse movie at 30fps, Electronic VR (Vibration Reduction) available	With sound: TV movie (640*) at 30fps, TV movie (640) at 15fps, Small size (320) at 15fps, Smaller size (160) at 15fps, Super movie (250) at 30fps, Super movie at 15fps; Without sound: Time lapse movie at 30fps, Electronic VR (Vibration Reduction) available	With sound: TV movie (640) at 15fps, Small size (320) at 15fps, Smaller size (160) at 15fps; Without sound: Time lapse movie at 15fps	With sound: TV movie (640) at 15fps, Small size (320) at 15fps, Smaller size (160) at 15fps; Without sound: Time lapse movie at 15fps	With sound: TV movie (640) at 15fps, Small size (320) at 15fps, Smaller size (160) at 15fps; Without sound: Time lapse movie at 15fps	With sound: TV movie (640) at 15fps, Small size (320) at 15fps, Smaller size (160) at 15fps; Without sound: Time lapse movie at 15fps	With sound: TV movie (640) at 15fps, Small size (320) at 15fps, Smaller size (160) at 15fps; Without sound: Time lapse movie at 15fps	With sound: TV movie (640) at 30fps, TV movie (640) at 15fps, Small size (320) at 30fps, Smaller size (160) at 30fps; Electronic VR (Vibration Reduction) available	With sound: TV movie (640) at 30fps, TV movie (640) at 15fps, Small size (320) at 30fps, Smaller size (160) at 30fps; Electronic VR (Vibration Reduction) available	With sound: TV movie (640) at 30fps, TV movie (640) at 15fps, Small size (320) at 30fps, Smaller size (160) at 30fps; Electronic VR (Vibration Reduction) available	With sound: TV movie (640) at 30fps, TV movie (640) at 15fps, Small size (320) at 30fps, Smaller size (160) at 30fps; Electronic VR (Vibration Reduction) available	With sound: TV movie (640) at 30fps, TV movie (640) at 15fps, Smaller size (160) at 30fps	With sound: TV movie (640) at 15fps, Small size (320) at 15fps, Smaller size (160) at 15fps	Without sound: TV movie (640) at 15fps, Small size (320) at 15fps, Smaller size (160) at 15fps
Capture modes	1) Single; 2) Continuous (approx. 2.5fps); 3) Interval (approx. 2.5fps); 4) UltraHS (up to 100 pictures at up to 30fps); 5) Multi shot (16 frames 1/16 in size); 6) Interval timer shooting	1) Single; 2) Continuous (approx. 2.5fps); 3) UltraHS (up to 100 pictures at up to 30fps); 4) Multi shot (16 frames 1/16 in size); 5) Interval timer shooting	1) Single; 2) Continuous (approx. 1.8fps); 3) Multi shot (16 frames 1/16 in size)	1) Single; 2) Continuous (approx. 1.8fps); 3) Multi shot (16 frames 1/16 in size)	1) Single; 2) Continuous (approx. 1.8 fps); 3) Multi shot (16 frames 1/16 in size)	1) Single; 2) Continuous (approx. 1.8 fps); 3) Multi shot (16 frames 1/16 in size)	1) Single; 2) Continuous (approx. 0.7fps); 3) Multi shot (16 frames 1/16 in size)	1) Single; 2) Continuous (approx. 2.5fps); 3) 5 shot buffer; 4) Multi shot (16 (available only at 5M image size))	1) Single; 2) Continuous (approx. 2.5fps); 3) 5 shot buffer; 4) Multi shot (16 (available only at 5M image size))	1) Single; 2) Continuous (approx. 2.5fps); 3) 5 shot buffer; 4) Multi shot (16 (available only at 5M image size))	1) Single; 2) Continuous (approx. 2.5fps); 3) 5 shot buffer; 4) Multi shot (16 (available only at 5M image size))	1) Single; 2) Continuous (approx. 2.5fps); 3) 5 shot buffer; 4) Multi shot (16 (available only at 5M image size))	1) Single; 2) Continuous (approx. 2.5fps); 3) 5 shot buffer; 4) Multi shot (16 (available only at 5M image size))	1) Single; 2) Continuous (approx. 2.5fps); 3) 5 shot buffer; 4) Multi shot (16 (available only at 5M image size))
Number of frames (with internal memory)	Fine approx. 7, Normal approx. 14, Basic approx. 27	Fine approx. 5, Normal approx. 10, Basic approx. 26	SM: High (25AE)* approx. 5, Normal (25AE) approx. 10, 3M: Normal (26AE) approx. 17	SM: High (25AE)* approx. 5, Normal (25AE) approx. 10, 3M: Normal (26AE) approx. 17	SM: High (26AE)* approx. 4, Normal (26AE) approx. 9, 3M: Normal (26AE) approx. 15	High (26AE)* approx. 4, Normal (26AE) approx. 9	High (26AE)* approx. 3, Normal (26AE) approx. 6	Fine approx. 4, Normal approx. 7, Basic approx. 16	Fine approx. 5, Normal approx. 10, Basic approx. 21	High (26AE)* approx. 4, Normal (26AE) approx. 7	High (25AE)* approx. 5, Normal (25AE) approx. 10	High (22AE)* approx. 7, Normal (22AE) approx. 14	High (22AE)* approx. 7, Normal (22AE) approx. 14	
Built-in flash	Range: 0.3 3m/1.8 ft in 12.8 ft in (W), 0.5 2m/1.6 ft in 6 ft in (T); Flash modes: Auto, Auto with Red eye Reduction, In Camera Red Eye/Fx, Anytime Flash, Flash Cancel, Anytime Flash, Slow Sync and Power Curtain Sync	Range: 0.3 3m/1.8 ft in 12.8 ft in (W), 0.5 2m/1.6 ft in 6 ft in (T); Flash modes: Auto, Auto with Red eye Reduction, In Camera Red Eye/Fx, Anytime Flash, Flash Cancel, Anytime Flash, Slow Sync and Power Curtain Sync	Range: 0.3 2.5m/1 ft 8 ft 2in (W), 0.3 1.4m/1 ft 4 ft 7 in (T); Flash modes: Auto, Auto with Red eye Reduction, In Camera Red Eye/Fx, Anytime Flash, Flash Cancel and Slow sync	Range: 0.3 2.5m/1 ft 8 ft 2in (W), 0.3 1.4m/1 ft 4 ft 7 in (T); Flash modes: Auto, Auto with Red eye Reduction, In Camera Red Eye/Fx, Anytime Flash, Flash Cancel and Slow sync	Range: 0.3 2.5m/1 ft 8 ft 2in (W), 0.3 1.4m/1 ft 4 ft 7 in (T); Flash modes: Auto, Auto with Red eye Reduction, In Camera Red Eye/Fx, Anytime Flash, Flash Cancel and Slow sync	Range: 0.3 2.5m/1 ft 8 ft 2in (W), 0.3 1.4m/1 ft 4 ft 7 in (T); Flash modes: Auto, Auto with Red eye Reduction, In Camera Red Eye/Fx, Anytime Flash, Flash Cancel and Slow sync	Range: 0.3 2.5m/1 ft 8 ft 2in (W), 0.3 1.4m/1 ft 4 ft 7 in (T); Flash modes: Auto, Auto with Red eye Reduction, In Camera Red Eye/Fx, Anytime Flash, Flash Cancel and Slow sync	Range: 0.3 4.5m/1 ft 4 ft 10.8 in (W), 0.3 3.5m/1 ft 11.6 in (T); Flash modes: Auto, Auto with Red eye Reduction, In Camera Red Eye/Fx, Anytime Flash, Flash Cancel and Slow sync	Range: 0.3 4.5m/1 ft 4 ft 10.8 in (W), 0.3 3.5m/1 ft 11.6 in (T); Flash modes: Auto, Auto with Red eye Reduction, In Camera Red Eye/Fx, Anytime Flash, Flash Cancel and Slow sync	Range: 0.3 4.5m/1 ft 4 ft 10.8 in (W), 0.3 3.5m/1 ft 11.6 in (T); Flash modes: Auto, Auto with Red eye Reduction, In Camera Red Eye/Fx, Anytime Flash, Flash Cancel and Slow sync	Range: 0.3 4.2m/1 ft 4 in 11 ft 2 in (W), 0.4 2.2m/1 ft 4 in 6 ft 7 in (T); Flash modes: Auto, Auto with Red eye Reduction, In Camera Red Eye/Fx, Anytime Flash, Flash Cancel and Slow sync	Range: 0.3 4.2m/1 ft 4 in 10 ft 10 in (W), 0.4 2.2m/1 ft 4 in 6 ft 7 in (T); Flash modes: Auto, Auto with Red eye Reduction, In Camera Red Eye/Fx, Anytime Flash, Flash Cancel and Slow sync	Range: 0.3 4.2m/1 ft 4 in 10 ft 10 in (W), 0.4 2.2m/1 ft 4 in 6 ft 7 in (T); Flash modes: Auto, Auto with Red eye Reduction, In Camera Red Eye/Fx, Anytime Flash, Flash Cancel and Slow sync	
Interface	Wi-Fi, USB 2.0, Audio Video output	Wi-Fi, USB 2.0, Audio Video output	USB, Audio Video out port (via COOL STATION MV 11)	USB, Audio Video out port (via COOL STATION MV 12)	USB, Audio video out port (via COOL STATION MV 11NV 116)	USB	USB	USB, Audio Video output	USB, Audio Video output	USB, Audio Video output	USB, Audio Video output	USB, Video output	USB, Video output	
Supported languages	German/English/Spanish/French/Italian/Dutch/Swedish/Japanese/Simplified Chinese/Traditional Chinese/Korean/Russian selectable in menu display	German/English/Spanish/French/Italian/Dutch/Swedish/Japanese/Simplified Chinese/Traditional Chinese/Korean/Russian selectable in menu display	German/English/Spanish/French/Italian/Dutch/Swedish/Japanese/Simplified Chinese/Traditional Chinese/Korean/Russian selectable in menu display	German/English/Spanish/French/Italian/Dutch/Swedish/Japanese/Simplified Chinese/Traditional Chinese/Korean/Russian selectable in menu display	German/English/Spanish/French/Italian/Dutch/Swedish/Japanese/Simplified Chinese/Traditional Chinese/Korean/Russian selectable in menu display	German/English/Spanish/French/Italian/Dutch/Swedish/Japanese/Simplified Chinese/Traditional Chinese/Korean/Russian selectable in menu display	German/English/Spanish/French/Italian/Dutch/Swedish/Japanese/Simplified Chinese/Traditional Chinese/Korean/Russian selectable in menu display	German/English/Spanish/French/Italian/Dutch/Swedish/Japanese/Simplified Chinese/Traditional Chinese/Korean/Russian selectable in menu display	German/English/Spanish/French/Italian/Dutch/Swedish/Japanese/Simplified Chinese/Traditional Chinese/Korean/Russian selectable in menu display	German/English/Spanish/French/Italian/Dutch/Swedish/Japanese/Simplified Chinese/Traditional Chinese/Korean/Russian selectable in menu display	German/English/Spanish/French/Italian/Dutch/Swedish/Japanese/Simplified Chinese/Traditional Chinese/Korean/Russian selectable in menu display	German/English/Spanish/French/Italian/Dutch/Swedish/Japanese/Simplified Chinese/Traditional Chinese/Korean/Russian selectable in menu display	German/English/Spanish/French/Italian/Dutch/Swedish/Japanese/Simplified Chinese/Traditional Chinese/Korean/Russian selectable in menu display	German/English/Spanish/French/Italian/Dutch/Swedish/Japanese/Simplified Chinese/Traditional Chinese/Korean/Russian selectable in menu display
Power requirements	One Rechargeable Li-Ion Battery EN EL8 (supplied), AC Adapter EH EC2 (optional)	One Rechargeable Li-Ion Battery EN EL8 (supplied), AC Adapter EH EC2 (optional)	One Rechargeable Li-Ion Battery EN EL8 (supplied), AC Adapter EH EC2 (optional)	One Rechargeable Li-Ion Battery EN EL8 (supplied), AC Adapter EH EC2 (optional)	One Rechargeable Li-Ion Battery EN EL8 (supplied), AC Adapter EH EC2 (optional)	One Rechargeable Li-Ion Battery EN EL8 (supplied), AC Adapter EH EC2 (optional)	Two AA size batteries (Rechargeable LR6/Battery EN MH1 with Battery Charge MH 71, LR6 alkaline test shoes, 2RH eye/nickel batteries and FR6-LR61 Heavy batteries), AC Adapter EH EC2B	One Rechargeable Li-Ion Battery EN EL5 (supplied), one CP1 lithium battery, AC adapter EH EC2A (optional)	Two EN MH1 rechargeable batteries, two LR6 (AA size alkaline) batteries, two 296 (AAA size nickel manganese) batteries, two FR6 (AA size lithium) batteries	Two EN MH1 rechargeable batteries, two LR6 (AA size alkaline) batteries, two 296 (AAA size nickel manganese) batteries, two FR6 (AA size lithium) batteries	Two EN MH1 rechargeable batteries, two LR6 (AA size alkaline) batteries, two 296 (AAA size nickel manganese) batteries, two FR6 (AA size lithium) batteries	Two EN MH1 rechargeable batteries, two LR6 (AA size alkaline) batteries, two 296 (AAA size nickel manganese) batteries, two FR6 (AA size lithium) batteries	Two EN MH1 rechargeable batteries, two LR6 (AA size alkaline) batteries, two 296 (AAA size nickel manganese) batteries, two FR6 (AA size lithium) batteries	
Battery life*	Approx. 190 shots with EN EL8 Rechargeable Battery	Approx. 190 shots with EN EL8 Rechargeable Battery	Approx. 200 shots with EN EL8 Rechargeable Battery	Approx. 190 shots with EN EL8 Rechargeable Battery	Approx. 190 shots with Rechargeable Battery EN EL8	Approx. 190 shots with Rechargeable Battery EN EL8	Approx. 190 shots with EN MH1 B2 Rechargeable Batteries, approx. 450 shots with NiMH batteries, approx. 230 shots with LR6 (AA size alkaline batteries)	Approx. 220 shots with EN EL5 battery	Approx. 270 shots with EN EL5 battery	Approx. 270 shots with EN EL5 battery	Approx. 270 shots with EN EL5 battery	Approx. 270 shots with EN EL5 battery	Approx. 270 shots with EN EL5 battery	
Dimensions (widthxh)	Approx. 81 x 60 x 20mm (3.2 x 2.4 x 1.5 in.)	Approx. 81 x 60 x 20mm (3.2 x 2.4 x 1.5 in.)	Approx. 89 x 57.5 x 19mm (3.5 x 2.3 x 0.8 in.)	Approx. 81 x 59.2 x 20mm (3.2 x 2.3 x 0.9 in.)	Approx. 89 x 57.5 x 19mm (3.5 x 2.3 x 0.8 in.)	Approx. 89 x 57.5 x 19mm (3.5 x 2.3 x 0.8 in.)	Approx. 115 x 60.5 x 27mm (4.4 x 2.4 x 1.1 in.)	Approx. 68 x 60 x 36.5mm (2.7 x 2.4 x 1.4 in.)	Approx. 68 x 60 x 36.5mm (2.7 x 2.4 x 1.4 in.)	Approx. 68 x 60 x 36.5mm (2.7 x 2.4 x 1.4 in.)	Approx. 68 x 60 x 36.5mm (2.7 x 2.4 x 1.4 in.)	Approx. 68 x 60 x 36.5mm (2.7 x 2.4 x 1.4 in.)	Approx. 68 x 60 x 36.5mm (2.7 x 2.4 x 1.4 in.)	
Weight	Approx. 170g (6 oz.) (without lens and SD memory card)	Approx. 170g (6 oz.) (without lens and SD memory card)	Approx. 110g (4 oz.) (without lens and memory card)	Approx. 140g (5 oz.) (without lens and memory card)	Approx. 110g (4 oz.) (without lens and memory card)	Approx. 110g (4 oz.) (without lens and memory card)	Approx. 250g (7.9 oz.) (without battery and memory card)	Approx. 190g (6.7 oz.) (without battery and memory card)	Approx. 150g (5.3 oz.) (without battery and memory card)	Approx. 150g (5.3 oz.) (without battery and memory card)	Approx. 150g (5.3 oz.) (without battery and memory card)	Approx. 150g (5.3 oz.) (without battery and memory card)	Approx. 150g (5.3 oz.) (without battery and memory card)	
Others	Wireless capability: IEEE802.11b/g, wireless range up to 30m (depending on environment)	Wireless capability: IEEE802.11b/g, wireless range up to 30m (depending on environment)	Water resistance: Equivalent to IEC 60520 IPX4 ("splash proof")	Water resistance: Equivalent to IEC 60520 IPX4 ("splash proof")	Water resistance: Equivalent to IEC 60520 IPX4 ("splash proof")	Water resistance: Equivalent to IEC 60520 IPX4 ("splash proof")	Water resistance: Equivalent to IEC 60520 IPX4 ("splash proof")	Water resistance: Equivalent to IEC 60520 IPX4 ("splash proof")	Water resistance: Equivalent to IEC 60520 IPX4 ("splash proof")	Water resistance: Equivalent to IEC 60520 IPX4 ("splash proof")	Water resistance: Equivalent to IEC 60520 IPX4 ("splash proof")	Water resistance: Equivalent to IEC 60520 IPX4 ("splash proof")	Water resistance: Equivalent to IEC 60520 IPX4 ("splash proof")	

\* Based on CIPA industry standard for measuring life of camera batteries. Measured at 25°C (77°F); zoom adjusted with each shot, built-in flash fired with every other shot, image mode set to Normal.

\*\* Based on Nikon test results. The body of the COOLPIX S2 offers "splash proof" water resistance. It is not waterproof and should never be immersed in water.

Specifications and equipment are subject to change without any notice or obligation on the part of the manufacturer.

● Supplied accessory  
○ Optional accessory

	Batteries <sup>1</sup>						USB Cables		Cases	Lens	AC Adapters				Software	Cradles			Wireless Adapter	
	Battery Charger MH-61	Battery Charger MH-62	Battery Charger MH-71	Rechargeable Li-ion Battery EN-EL5	Rechargeable Li-ion Battery EN-EL6	Rechargeable Ni-MH Battery EN-MH1	USB Cable UC-E10	USB Cable UC-E8	Waterproof Case WP-CP3	Waterproof Case WP-CP5	Lens Cap LC-CP16	AC Adapt EH-A	AC Adapter EH-e2B	AC Adapter EH-e2C	AC Adapter EH-63	PictureProject CD-ROM	COOL-STATION MV-11	COOL-STATION MV-11B	COOL-STATION MV-12	Wireless Printer Adapter PD-10
COOLPIX P1		●○			●○			●					○		●					○
COOLPIX P2		●○			●○			●					○		●					○
COOLPIX S1		○			●		●			○				●○	●	●				
COOLPIX S2		○			●		●							●○	●				●○	
COOLPIX S3		○			●○		●			○				●○	●	●○ <sup>2</sup>	●○ <sup>3</sup>			
COOLPIX S4			●○			●○		●		●		○			●					
COOLPIX L1			●○			●○		●				○			●					
COOLPIX 7900	●			●				●				○			●					
COOLPIX 5900	●			●				●				○			●					
COOLPIX 7800			●○			●○		●				○			●					
COOLPIX 5600			●○			●○		●		○ <sup>4</sup>			○		●					
COOLPIX 4600			●○			●○		●		○ <sup>4</sup>			○		●					

<sup>1</sup> Supplied battery/batteries may differ by country or area. <sup>2</sup> Comes with COOLPIX S3 Brown red and Matte black models. <sup>3</sup> Comes with COOLPIX S3 Platinum silver and Ivory white models. <sup>4</sup> Not available in some countries or areas. <sup>5</sup> All models come with a strap, Audio Video Cable or Video Cable.

### Effective Megapixels

The effective megapixel count is the number of pixels that actually makes up the image captured by a digital camera. Images recorded with more effective megapixels will therefore contain a larger amount of image information, resulting in higher-level sharpness. See Total Megapixels.

### Total Megapixels

Not all pixels record a part of the image. Some are purposely masked off to receive no light, producing a baseline value from which to calibrate light received by the effective pixels. The number of masked-off pixels plus the number of effective pixels equals the number of total megapixels. See Effective Megapixels.

### Nikkor Lenses

Highly respected by leading professional photographers, Nikkor lenses are renowned for their outstanding autofocus performance, true-to-life color, high contrast and exceptional sharpness.

### Nikkor ED Glass

Lenses made of Super ED glass achieve sharper, clearer images. They are also more resilient than conventional lenses and offer more consistent optical performance.

### High-quality Zoom

COOLPIX cameras offer ample zooming capability, with performance extending to 10x zoom with the COOLPIX S4. As a result, they make it easy to zoom in for tight portraits, for example, or zoom right out to capture expansive landscapes.



### Internal Memory

Internal memory gives you the freedom to shoot images at any time, even when you're not carrying any memory media. It also makes it easy to transfer images between memory media as you please.

### Direct Printing

PictBridge direct print capability lets you conveniently connect your camera direct to a compatible printer — doing away with the need for a computer.

### Movie with Sound

The ability to record movies with sound lets you capture so much more of the moment, letting you record voices along with faces, or background noise to accompany scenery.

### Time-lapse Movie

Time-lapse Movie Mode creates movies out of images taken using the Time-lapse feature, which enables users to specify the interval between shots. Ideal for capturing action taking place over longer durations, it can be used to produce movies of flowers blooming, or clouds rushing across the sky, for example.

### TV/Small Size Movie

TV movie mode records VGA-size images (640 x 480 pixels) that fit perfectly on a TV screen. Small movie produces QVGA-size movies (320 x 240 pixels).

### Sepia Movie / B/W Movie

A choice of sepia and black-and-white movie shooting gives you the freedom to create movies with more mood and atmosphere.

### Best Shot Selector (BSS)

Best Shot Selector automatically selects the shot with the sharpest focus from a series of consecutive images.

### AE Best Shot Selector (AE-BSS)

Auto Exposure Best Shot Selector automatically selects the shot with the best relative exposure from a series of consecutive images.

### Scene Modes

Scene Modes make it easy to achieve pleasing results in a wide range of common situations. Select the icon best matching the scene and let the camera choose the optimal settings automatically.

### Advanced Scene Modes

Advanced Scene Modes let you apply different color shades to individual Scene Modes, choosing from different Intensity levels to produce pictures more in tune with your tastes.



### Scene Modes with Scene Assist

Scene Assist helps you take better pictures when using Portrait, Landscape, Sports and Night Landscape Scene Modes — helping you compose your pictures with useful framing guides displayed in the monitor.



### Macro Mode

Macro Mode lets you fill the frame with small objects, adjusting the lens for much closer focus and stopping down the aperture for maximum depth of field.



### Face-priority AF\*

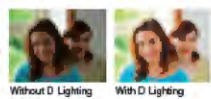
Face-priority AF has the power to automatically find, then focus on people's faces, achieving sharp results, no matter where the subject is located in the frame.



\* Face recognition capability may be limited in some shooting conditions.

### D-Lighting

D-Lighting lets you rescue underexposed images — automatically creating a copy of the shot, with enhanced detail and light wherever necessary.



### In-Camera Red-Eye Fix

In-Camera Red-Eye Fix gets rid of the annoying red-eye effect sometimes caused by flash, automatically detecting its occurrence and correcting it to produce more natural portraits at night.



### Underwater Scene Mode

Designed for use with optional Nikon waterproof cases, the Underwater Scene Mode lets you take pleasing pictures with true-to-life colors when snorkeling or scuba diving.

### Splash Proof Body

You can't always depend on the weather, but you can depend on Nikon. In fact, the COOLPIX S2 even features a splash proof aluminum body\* that lets you keep on shooting, even when the weather is not so great.

\* Splash proof water resistance equivalent to IEC 60529 IPX4. The COOLPIX S2 is not waterproof and should never be immersed in water.

	COOLPIX P1	COOLPIX P2	COOLPIX S1	COOLPIX S2	COOLPIX S3	COOLPIX S4	COOLPIX L1	COOLPIX T900	COOLPIX S900	COOLPIX T600	COOLPIX S1100	COOLPIX A660
Effective Megapixels	6.0	5.1	5.1	5.1	6.0	6.0	6.2	7.1	5.1	7.1	5.1	4.0
Total Megapixels	6.3	5.2	5.3	5.3	6.4	6.4	6.3	7.4	5.2	7.4	5.3	4.2
Nikkor Lenses	●	●	●	●	●	●	●	●	●	●	●	●
Nikkor ED Glass	—	—	●	●	●	—	—	●	●	●	—	—
High-quality Zoom	3.5x	3.5x	3x	3x	3x	10x	5x	3x	3x	3x	3x	3x
Internal Memory	32MB	16MB	12MB	12MB	12MB	13.5MB	10MB	13.5MB	13.5MB	14MB	14MB	14MB
Direct Printing	●	●	●	●	●	●	●	●	●	●	●	●
Movie with Sound	●	●	●	●	●	●	●	●	●	●	●	—
Time-lapse Movie	30fps	30fps	15fps	15fps	15fps	15fps	—	—	—	—	—	—
TV/Small Size Movie	30/15fps	30/15fps	15fps	15fps	15fps	15fps	15/30fps	15/30fps	15/30fps	30fps	15fps	15fps
Sepia Movie /B/W Movie	5/15fps	5/15fps	—	—	—	—	—	—	—	—	—	—

	COOLPIX P1	COOLPIX P2	COOLPIX S1	COOLPIX S2	COOLPIX S3	COOLPIX S4	COOLPIX L1	COOLPIX T900	COOLPIX S900	COOLPIX T600	COOLPIX S600	COOLPIX A660
Best Shot Selector (BSS)	●	●	●	●	●	●	●	●	●	●	●	●
AE Best Shot Selector (AE-BSS)	—	—	●	●	●	●	—	—	—	—	—	—
Scene Modes (Total)	16	16	17	16	17	16	15	16	16	16	16	16
Advanced Scene Modes	●	●	—	—	—	—	—	—	—	—	—	—
Scene Modes with Scene Assist	—	—	4	4	4	4	4	4	4	4	4	4
Macro Mode	4cm	4cm	4cm	4cm	4cm	4cm	4cm	4cm	4cm	4cm	4cm	4cm
Face-Priority AF	●	●	●	●	●	●	●	●	●	●	●	—
D-Lighting	●	●	●	●	●	●	●	●	●	●	●	●
In-Camera Red-Eye Fix	●	●	●	●	●	●	●	●	●	●	●	●
Underwater Scene Mode	—	—	●	—	●	—	—	●	●	—	●	●
Splash Proof Body	—	—	—	●	—	—	—	—	—	—	—	—

### Wireless LAN Support (IEEE802.11b/g)

Send shots from memory media to a computer at will, transfer each image to computer as soon as it's taken, or send images direct to a compatible printer — all without the need for wires and cables.



### Continuous Shooting

Swift continuous shooting capability lets you take a series of pictures in quick succession, making it easy to capture action as it happens.



### Aperture-priority Auto Mode

Enabling greater control over the shot, Aperture-priority Auto Mode lets you manually select aperture size, while the camera chooses the optimal shutter speed.

### Color Options

Color Options let you produce more creative results in a manner similar to using a filter, letting you change the mood of your images with a choice of Standard color, Vivid color, Black-and-white, Sepia and Cyanotype.

### Date Imprint

The Date Imprint function automatically adds date information to images taken, making it easy to organize pictures later on.

### Electronic Vibration Reduction (Electronic VR)

Electronic VR detects and compensates for minor camera movement in-camera, adding greater stability during movie recording.

### Small Picture

The Small Picture function reduces the size of data for selected images, making them better suited to emailing.

### TTL White Balance

Through The Lens White Balance automatically ensures accurate, optimal color temperature across a range of lighting conditions, keeping colors true to the way you see them.

### USB Interface

USB connectivity gives you plug-and-play convenience when connecting your camera to a computer or compatible printer — enabling image data to be transferred with speed and ease.

### USB 2.0 Interface

A USB 2.0 Hi-Speed interface delivers the same plug-and-play convenience of conventional USB, but with accelerated image transfer.

### Voice Recording

The handy Voice Recording function can be used to record literally hours of sound when used with sufficient memory media.

### White Balance Bracketing

White Balance Bracketing produces several images with varying color temperature from a single shot, allowing you to select the one that most closely suits your tastes or achieve the most pleasing results in diverse lighting conditions.

	COOLPIX P1	COOLPIX P2	COOLPIX S1	COOLPIX S2	COOLPIX S3	COOLPIX S4	COOLPIX L1	COOLPIX 7900	COOLPIX 9900	COOLPIX 7600	COOLPIX S10	COOLPIX 4600
Wireless LAN Support (IEEE802.11b/g)	●	●	—	—	—	—	—	—	—	—	—	—
Continuous Shooting	2.3fps	2.5fps	1.8fps	1.8fps	1.8fps	1.3fps	0.7fps	1.7fps	2.0fps	1.3fps	1.3fps	1.3fps
Aperture-priority Auto Mode	●	●	—	—	—	—	—	—	—	—	—	—
Color Options	—	—	●	●	●	●	●	●	●	●	●	●
Date Imprint	●	●	●	●	●	●	●	●	●	●	●	●
Electronic Vibration Reduction (Electronic VR) (w/ th movie recording)	●	●	—	—	—	●	—	●	—	●	—	—
Small Picture	●	●	●	●	●	●	●	●	●	●	●	●
TTL White Balance	●	●	●	●	●	●	●	●	●	●	●	●
USB Interface	●	●	●	●	●	●	●	●	●	●	●	●
USB 2.0 (Hi-Speed) Interface	●	●	—	—	—	—	—	—	—	—	—	—
Voice Recording	●	●	●	●	●	●	—	●	●	●	—	—
White Balance Bracketing	—	—	—	—	—	—	—	●	●	—	—	—

# Nikon Digital SLR – Further quality, faster response, exciting new potential



D2x

### High resolution and optimal handling for the professional

- 12.4 effective megapixel CMOS image sensor
- Continuous shooting: up to 5fps at 12.4 megapixels for up to 15 NEF (Nikon Electronic Format) images
- New image processing algorithms produce smoother, more consistent gradations
- 3D-Color Matrix Metering II for superior exposure metering
- High-speed, high-precision 11-area AF system with 9 cross-type AF sensors
- Instant power-up; ultra-fast 37ms shutter lag
- Top shutter speed: 1/8,000 second; Flash sync speeds up to 1/250 second



D2Hs

### The professional digital SLR for action and sports

- 4.1 effective megapixel Nikon DX Format LBCAST image sensor
- Continuous shooting: up to 8fps at 4.1 megapixels for up to 40 NEF (Nikon Electronic Format) images
- Instant power-up; ultra-fast 37ms shutter lag
- High-speed, high-precision 11-area AF system with 9 cross-type AF sensors
- 3D-Color Matrix Metering II for superior exposure metering
- Color Reproduction System offers 3 selectable color modes for different environments
- i-TTL flash control supports Nikon's Creative Lighting System with SB-900 or SB-900 Speedlights



D70s

### Award-winning refinement to further enhance your love of pictures

- 6.1 effective megapixel Nikon DX Format CCD image sensor
- 0.2 sec. power-up; minimal shutter release lag
- Fast shutter speed ranging from 30 to 1/8,000 sec.
- Fast flash sync shutter speeds up to 1/500 sec.
- Large 2.0-inch LCD monitor
- Improved 5-area AF system with predictive focus tracking and Lock-on™
- 7 automated Digital Vari-Program selections



D50

### The power to make every occasion and picture special

- 6.1 effective megapixel Nikon DX Format CCD image sensor
- 7 automated Digital Vari-Program selections, including new "Child" mode
- 3D-Color Matrix Metering II for superior exposure metering
- High-performance digital image processor renders vivid color and clear detail
- Continuous shooting: up to 2.5fps for up to 137 JPEG Large frames\*
- 0.2 sec power-up; near-instant shutter response
- Simultaneous recording of NEF (RAW) and JPEG data for accelerated workflow

\* When using 256MB SanDisk Ultra II SD Card

## COOLWALKER MSV-01

View images anywhere with impressive storage capacity

The COOLWALKER combines easy image storage and viewing with compact handheld convenience. Compatible with CompactFlash™ and MicroDrive™ and SD cards via a CF adapter\*, it makes image transfer easy. Equipped with an ample 30GB hard disk, it enables the handy storage of up to an impressive 10,000\*\* images. It also features a 2.5-inch color TFT LCD for viewing on the move and can also be connected to a TV for display on a grander scale.

\* CF card adapter available from third-party vendor.  
\*\* Calculated for 6-megapixel images stored in JPEG FINE format.



**WARNING** TO ENSURE CORRECT USAGE, READ MANUALS CAREFULLY BEFORE USING YOUR EQUIPMENT. SOME DOCUMENTATION IS SUPPLIED ON CD ROM ONLY.

Microsoft® and Windows® are either registered trademarks or trademarks of Microsoft Corporation in the United States and/or other countries. Macintosh® and QuickTime® are either registered trademarks or trademarks of Apple Computer, Inc. in the United States and/or other countries. The PhotoNation logo is a trademark. The SD logo is a trademark. PictBridge is a trademark. D-Lighting technology is provided by Apical Limited. Face priority AF technology is provided by Identix®. Products and brand names are trademarks or registered trademarks of their respective companies.

Specifications and equipment are subject to change without any notice or obligation on the part of the manufacturer. September 2005 65005 NIKON CORPORATION



NIKON CORPORATION  
Fuji Bldg., 2-3, Marunouchi 3-chome, Chiyoda-ku,  
Tokyo 100-8331, Japan  
<http://nikonimaging.com/>