



Remarkably easy to operate, the COOLPIX 885 delivers outstanding Nikon-quality results. It's as simple as selecting Auto Mode and pressing the shutter release button. Your COOLPIX 885 handles all the rest — from focus and exposure control to firing the flash, when necessary.

Just point and shoot for superb images

With 12 programmed Scene Modes, anyone — even a novice photographer — can take great images, simply by choosing the most suitable mode for the next shot.

Capture the essence of every scene



SHARE

SEE

SEND

Enjoy your images in so many ways

Select Full Size (2,048 x 1,536 pixels) for large images that maintain impressive quality even when printed out on your printer in A4 size or larger. Or use the Small Picture function to create an ideal-size image for e-mail or the Web.

Transfer images at the touch of a button

Connect the COOLPIX 885 to your computer with the USB cable (supplied), then press the Transfer Button. Your selected images in the COOLPIX 885 will be uploaded automatically to your computer.*

*Requires Nikon View 4 software (supplied)

Wide



Tele



The superb Zoom-Nikkor with 3x optical zoom brings distant objects up close. And the built-in 4x Digital Zoom extends your reach even further.

Get up close and personal



4x digital zoom

Longer battery life

Enjoy the freedom of being able to shoot for longer without interruption. The EN-EL1 Rechargeable Li-ion Battery gives you approximately 90 minutes of continuous operation.



Rechargeable Li-ion Battery and Charger

Instant image review

The one-touch Quick Review button lets you view your shots quickly and easily — without having to switch between modes. Just check whether you like the last picture or not, then revert immediately to take the next shot.

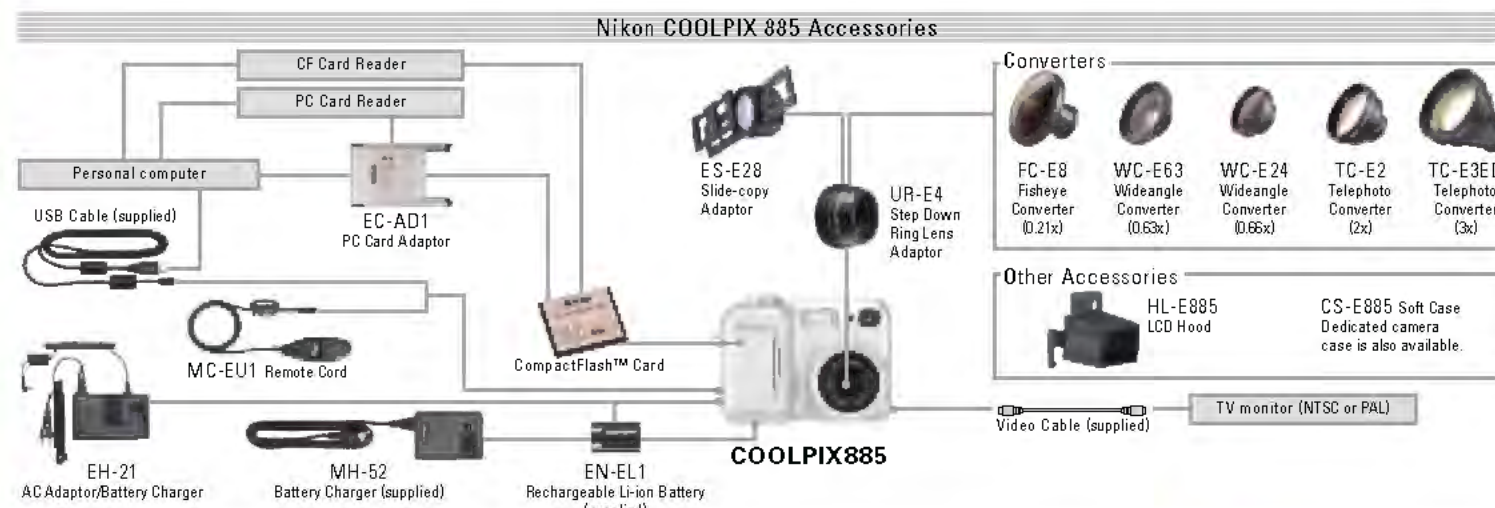


Quick Review



One-touch data upload

COOLPIX 885



Nikon COOLPIX 885 Specifications

Type:	Digital camera E885	Bracketing, Noise Reduction and F Ca d For at),	Movie (up to 40 sec. of QVGA frames at 15 fps)
Effective pixels:	3.21 million	Capture modes:	Single, Continuous, Multi-Shot (16 frames 1/16 in size), VGA Sequence, Ultra High Speed (70 QVGA images at approx. 30 fps)
CCD:	1/1.8-inch Interline CCD	Exposure metering modes:	256-segment Matrix, Centre-Weighted, Spot, Spot AF Area
Image size:	Total pixels 3.37 million Selectable from: Full (2,048 x 1,536 pixels), XGA (1,024 x 768 pixels), VGA (640 x 480 pixels), Four Small Picture sizes selectable (640 x 480, 320 x 240, 160 x 120 or 96 x 72 pixels)	Exposure:	Control Exposure mode: Programmed Auto, Manual Exposure compensation: ±2.0 EV in steps of 1/3 EV, Auto Exposure Bracketing
Lens:	3x Zoom-Nikkor; f = 8.24mm (35mm camera format equivalent to 38-114mm); f/2.8-4.9; 9 elements in 8 groups	Shutter:	Mechanical and charge-coupled electronic shutter Speed: 8-1/10 sec., Bulb up to 60 sec. in Manual exposure mode
Digital zoom:	4X digital zoom in 20 steps of 0.2X	Aperture:	Electronically controlled preset aperture
Autofocus (AF):	Contrast-detect through-the-lens (TTL) AF	Sensitivity:	ISO equivalent 100, 200, 400, Auto, can be set in CSM mode
Focus modes:	Continuous AF (Monitor on), Single AF (Monitor off), Manual (49 positions, with focus confirmation indication)	White balance:	A to with TTL control, 5-mode manual with fine tuning, pre-set white balance, White Balance Bracketing
Focus range:	30cm (1 ft.) to ∞ at widest angle (W), 60cm (2 ft.) to ∞ at telephoto (T) Macro mode (Autofocus): 4cm (1.6 in.) to ∞ (W), 30cm (1 ft.) to ∞ (T)	Self-time:	10 sec. or 3 sec. duration
Viewfinder:	Real-image zoom optical viewfinder with LED indication	Built-in Speedlight:	Range: 0.4 to 3.7m (1.3 to 12.1 ft.) (W), 0.4 to 2.3m (1.3 to 7.5 ft.) (T) Flash modes: Auto, Flash Cancel (off), Red-Eye Reduction, Anytime Flash (fill-flash), Slow Sync
Monitor:	1.5-in., 110,000-dot, low-temperature polysilicon TFT LCD with brightness and hue adjustment	Playback:	Playback modes: Single frame, thumbnail (nine or four images), movie, zoom (4x), slide show, histogram indicator/highlight point display, focus confirmation indication
Storage system:	File formats include HI (uncompressed TIFF-RGB), JPEG (Compressed, Baseline-compliant; FINE: approx. 1/4, NORMAL: approx. 1/8, BASIC: approx. 1/16) and MOV (QuickTime compliant, 15 fps). Compliant with Design rule for Camera File systems; Digital Print-Order Format (DPOF) and PRINT Image Matching (PIM) compatible	Computer interface:	USB 1.1
Storage media:	CompactFlash™ (CF) Card Type I	Video output:	Selectable between NTSC and PAL DC input, Data output (video/USB)
Approximate capacity:	Number of images per 16MB (64MB)	I/O terminals:	AC Adaptor/Battery Charger EH-21 (available separately)
		Power requirements:	One Rechargeable Li-ion Battery EN-EL1, or six-volt 2CR5 (DL245) lithium battery; Approx. 90 min. (EN-EL1) or 110 min. (2CR5 (DL245)) when using monitor at 20°C (68°F)
		Battery life:	Approx. 95 x 69 x 52mm (3.7 x 2.7 x 2.0 in.)
		Body finish:	Metallic silver and charcoal black
		Dimensions (W x H x D):	Approx. 225g (7.9 oz.) without battery and CompactFlash™ card
		Weight:	Approx. 95 x 69 x 52mm (3.7 x 2.7 x 2.0 in.)
Shooting modes:	Auto, Scene (Portrait, Party/Indoor, Night Portrait, Beach/Snow Landscape, Sunset, Night Landscape, Museum, Fireworks Show, Close Up, Copy and Back Light), Custom (CSM) (includes shooting menu for control of White Balance, Metering, Continuous, Best-Shot Selector, Image Adjustment, Image Sharpening, Lens, Image Size & Quality, Sensitivity, Exposure Options, Focus Options, Auto	Supplied accessories:	Lens cap, Wrist strap, Video cable, 16MB CompactFlash™ card, USB cable, Nikon View 4 (COOLPIX) CD-ROM, Rechargeable Li-ion Battery EN-EL1, Battery Charger MH-52 * Supplied accessories may differ by country and era

Nikon View 4 System Requirements

Macintosh	OS: Mac OS 8.6, 9, 9.1 Models: iMac™, Power Macintosh™ G3 (8/White), Power Mac™ G4 or later; iBook™, PowerBook™ G3 only built-in USB ports are supported or later RAM: 32Mbyte, 64Mbyte or more recommended Hard disk: An additional amount equivalent to twice the capacity of the camera memory card required when Nikon View is running Display: 640 x 480 with 16-bit colour (800 x 600 or greater, full colour recommended) CD-ROM drive: USB interface (only built-in USB ports supported) Others: Mac OS 8.6 needs USB driver (ver. 1.3.9) on Apple's website
------------------	--

Windows

OS/Models	Windows® 98/98SE, Windows® 2000, Windows® Me pre-installed mode
CPU	MMX® Pentium® or later
RAM	32Mbyte (64Mbyte or more recommended)
Hard disk	An additional amount equivalent to twice the capacity of the camera memory card required when Nikon View is running
Display	640 x 480 with 16-bit colour (800 x 600 or greater, full colour recommended)
Others	CD-ROM drive, USB interface (only built-in USB ports supported)

Microsoft® and Windows® are either registered trademarks or trademarks of Microsoft Corporation in the United States and/or other countries. Macintosh® and QuickTime® are either registered trademarks or trademarks of Apple Computer, Inc. in the United States and/or other countries. CompactFlash™ is a trademark of SanDisk Corporation. Products and brand names are trademarks or registered trademarks of their respective companies. Images on LCDs and monitors shown in this brochure are simulated.

Specifications and equipment are subject to change without any notice or obligation on the part of the manufacturer. September 2001
© 2001 NIKON CORPORATION



COOLPIX 885 supports EPSON's "PRINT Image Matching". "PRINT Image Matching" is a technology which assists in producing vivid photo-quality prints from PIM-enabled digital cameras. To obtain this benefit, a digital camera and printer that are compatible with "PRINT Image Matching" are required.



WARNING
TO ENSURE CORRECT USAGE, READ MANUALS CAREFULLY BEFORE USING YOUR EQUIPMENT. SOME DOCUMENTATION IS SUPPLIED ON CD-ROM ONLY.



NIKON CORPORATION
FUJI BLDG., 2-3, MARUNOUCHI 3-CHOME, CHIYODA-KU, TOKYO 100-8331, JAPAN
www.nikon-image.com/eng/

Printed in Japan Code No. 6CE41172 (0109-93.57)K

Nikon

Suits any occasion
Go-anywhere design

Click to take great images

Fits in your hand
Crystal-clear images
Instant image review



Ready for anything

COOLPIX 885

3x

Zoom-Nikkor Lens

3.2

Effective Megapixels

5

Area Multi Autofocus

Rechargeable Battery and Charger Included

12

Scene Modes



MAKE THE **MOST** OF ANY SITUATION



Actual size

Imagine a digital camera that's able to fulfill all your needs, to transform every picture that you take into something exceptional. With a 3x Zoom-Nikkor and 3.2 effective megapixels producing crystal-clear, high-resolution images, the COOLPIX 885 is the ideal digital camera for beginners and experts alike. Easy-to-use Auto and 12 Scene Modes capture every activity — from family snapshots to business scenes — with optimum results. Convenient features range from Quick Review to One-touch Transfer and the Small Picture function. Not only is the COOLPIX 885 small and light enough to take along everywhere you go, but its elegant design ensures you'll want to. It's quick and quiet, too. In short, the COOLPIX 885 is everything you need to make the most of every situation.

Images on LCDs and monitors shown in this brochure are simulated.



Tele

Wide

Sharp, clear images and brilliant colours 3x Zoom-Nikkor with 3.2 Effective Megapixels



The incredibly sharp 8-24mm Zoom-Nikkor lens — equivalent to 38-114mm in 35mm format — employs professional-quality aspherical lens elements to produce super-sharp images throughout the 3x zoom (optical) range. Boasting 3.2 effective megapixels, the

COOLPIX 885 delivers ultrahigh-definition 2,048 x 1,536-pixel images of brilliant, detailed expression. And by applying performance-proven COOLPIX image processing — Nikon has ensured outstanding clarity and colour reproduction. This powerful trinity of technologies — 3x Zoom-Nikkor, 3.2 effective megapixels and superb image processing — enables the COOLPIX 885 to give you truly remarkable, crystal-clear digital images.



Make every shot picture-perfect

Auto and 12 Scene Modes

The COOLPIX 885's general-purpose Auto mode and 12 programmed Scene Modes make it easy to capture the essence of every picture you take. These special modes automatically handle focus, exposure, white balance and other adjustments to give you consistently impressive photos. All you do is press the shutter release button. And at slower shutter speeds the automatic Noise Reduction function is activated to give you visibly superior pictures. Great digital images have never been so easy.

- Party/ Indoor**
Preserves that special atmosphere of a get-together.
- Beach/Snow**
Vividly captures the sparkling brightness of snow and white sand scenes.
- Night Landscape**
Produces stunning night landscapes by employing slow shutter speeds.
- Fireworks Show**
Freezes a fireworks display at the "ooohhh" moment with a super-responsive shutter release button.
- Back Light**
Balances the illumination of the subject against a bright background with automatic fill-in flash.
- Museum**
Produces bright pictures without need for triggering the flash. *Note that in some museums or exhibition, it is prohibited to take pictures, even without flash. Be sure to obtain permission before taking any pictures.*
- Landscape**
Captures distant scenes with postcard-sharp clarity.



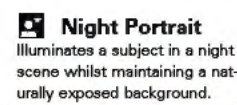
Auto
Produces optimal results in a diverse array of situations.



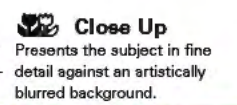
Sunset
Naturally preserves the exquisite beauty of sunsets.



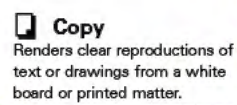
Portrait
Emphasises your subject with natural skin tones against a soft, pleasant background.



Night Portrait
Illuminates a subject in a night scene whilst maintaining a naturally exposed background.



Close Up
Presents the subject in fine detail against an artistically blurred background.



Copy
Renders clear reproductions of text or drawings from a white board or printed matter.



Expand your horizons

COOLPIX Accessories

Experience various converters — Wideangle, Telephoto, Fisheye — with a lens adaptor: Wideangle broadens your perspective, giving you a world view you can't see with your eyes alone; the

Telephoto converter brings distant objects up close. The remote cord lets you release the shutter without actually holding the camera body, to prevent camera shake or to allow unintrusive

photography. And the optional LCD Hood offers a clear view of the monitor even in bright daylight. Enhance your COOLPIX 885's potential with a wide array of accessories.



With Wideangle Converter WC-E63



HL-E885 LCD Hood



Your own personal touch

Creative Control Options

Autofocus

The COOLPIX 885's Five-Area Multi Autofocus provides extensive focus coverage of the frame for easier composition, even with moving subjects. A directional Multi Selector lets you choose from the five areas for a more specific focus. And Macro mode allows you to get as close to your subject as 4cm.

Exposure metering

Nikon's exclusive 256-segment automatic Matrix Metering system is always ready for even the most difficult lighting conditions. For more direct control over

your images, choose between Centre-Weighted and Spot Metering.

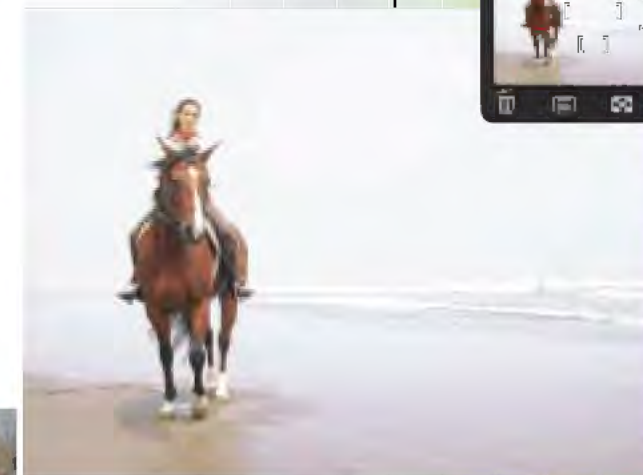
White Balance

Auto White Balance offers the optimum white balance setting for a wide range of lighting situations. And White Balance Bracketing proves invaluable when shooting a scene with several different lighting sources, automatically creating three images of different white balance values so you can choose the one you like. The COOLPIX 885 offers both Manual and Preset modes for precise fine-tuning.

Speedlight

The built-in Speedlight fires the flash when needed. The COOLPIX 885 lets you choose from various flash modes (Auto Flash, Flash Cancel, Anytime Flash, Slow Sync, and Red Eye Reduction).

Five-Area Multi Autofocus



White Balance Bracketing

