

**Mamiya**

**Mamiya ZD**

app-phot.com

 **Mamiya**  
DIGITAL

Mamiya

# DIGITAL RE-DEFINED

The birth of a new era in photography

The world's first Integrated Medium Format Digital Camera.

A new digital innovation inherited from over 60 years of innovative design and sophisticated engineering.

Conceived and designed for the professional photographer who is not willing to compromise on quality.

The Mamiya ZD leads digital imaging into the next generation, re-defining the standards by which digital cameras are perceived. Experience the Mamiya ZD and you will understand why digital photography has changed, turning your creative vision into reality.



# Mamiya ZD



**Mamiya**



**DIGITAL RE-DEFINED**



## 21.3-MEGA PIXELS

Mamiya continues its commitment to innovative designs and cutting edge technology, as it enters into the digital age with an over 20 Million Pixel camera.

The large 48mmx36mm Dalsa CCD sensor has a resolution of 5328 x 4000 pixels making the Mamiya ZD the world's first integrated Medium Format Digital camera

### ● Total 21.7 Mega Pixel Dalsa CCD

The Mamiya ZD captures images in 12 bit color per channel. 12 bit color offers smoother tonal transitions and the ability to display subtle differences in hues.

### ● ASIC (Application Specific Integrated Circuits) processor

Developed exclusively for the Mamiya ZD. The ASIC processor optimizes image data from the CCD in real time.

### ● IEEE 1394

The Mamiya ZD can be tethered to a computer via a four pin IEEE cable for transferring data to a computer. The camera is also equipped with a Video Out jack for reviewing images on a television monitor.

### ● 1.8 Inch TFT Monitor / LCD Panel

A large 1.8 inch TFT monitor is located on the back of the camera for reviewing images. A second LCD screen located below the TFT monitor shows camera information such as shutter speeds, f-stops and more.

### ● Auto White Balance

The Mamiya ZD gives the photographer nine preset white balance options, as well as an auto white balance setting.

### ● Color Space

The Mamiya ZD offers the option of choosing sRGB or Adobe RGB color space to accommodate various work flows.

### ● Dual Memory Card Slots

The Mamiya ZD camera has two memory card slots for use with both Compact Flash (Type I and Type II) as well as SD media cards. Giving the user the option of shooting un-tethered for complete portability.

### ● Removable Low Pass Filter

Mamiya is the only camera company in the world that gives the photographer the option of removing the Low Pass Filter. The filter is sealed in a protective cartridge, preventing it from dust and scratches.

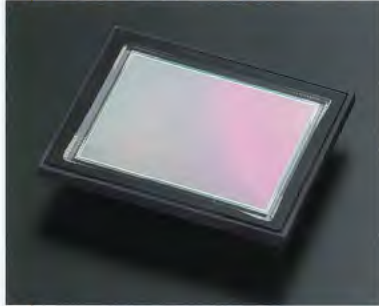
### ● Color Preferences

One of four Preset Color Preferences can be set by the user.  
Standard: Used for general photography.  
Portrait: Used for photographing people.  
Landscape: Ideal for nature and landscape  
Still Life: Accurately reproduces colors for product photography.

### ● File Size / Compression

The Mamiya ZD offers the option of selecting three quality modes, each with three compression setting options, for a total of nine selectable quality settings.

## ● Total 21.7 Mega Pixel Dalsa CCD



Utilizing the large Dalsa 48mm × 36mm CCD in conjunction with the ASIC processing engine, the Mamiya ZD captures a 35 MB RAW file. It can be saved as a RAW file or processed to a JPEG on the fly. These large files offer the quality and resolution imperative for professional imaging.

## ● ASIC (Application Specific Integrated Circuits)



Developed exclusively for the Mamiya ZD. The ASIC processor optimizes image data from the CCD in real time. The ASIC engine also uses power saving technologies to prolong battery life and provides accurate white balance.

## ● IEEE 1394



The Mamiya ZD can be operated tethered to a computer via a four pin IEEE 1394 cable for high speed transfer. The camera also has a Video Out jack for reviewing images on a television monitor.

## ● 1.8 Inch TFT Monitor / LCD Information Panel



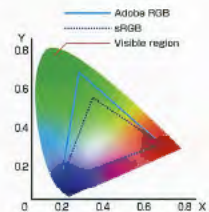
A large 1.8 inch TFT monitor is located on the back of the camera for reviewing images. It displays a 100% of the image area with full brightness control. A second LCD screen located below the TFT monitor shows camera information such as image quality, ISO, white balance, storage media, and more.

## ● Auto White Balance

Photographer has complete and precise control over the White Balance with nine Preset White Balance options including Auto White Balance. In addition a custom color Temperature (Kelvin) setting provides fine color adjustments in increments of 100k from 2,800k to 10,000k.

## ● Color Space

The Mamiya ZD offers the option of choosing sRGB or Adobe RGB color space to accommodate various work flows.

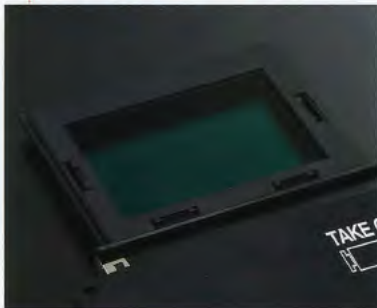


## ● Dual Memory Card Slots



The Mamiya ZD camera has two memory card slots. Compact Flash cards (Type I and Type II), and SD card.

## ● Removable Low Pass Filter



Mamiya is the only camera company in the world that gives the photographer the option of removing the Low Pass Filter. The filter is sealed in a protective cartridge, preventing it from dust and scratches.



Removing the Low Pass Filter is a quick and easy one touch operation.

## ● Selectable Color Preferences

One of four Preset Color Preferences can be set by the user.

- **Standard** : Used for general photography.
- **Portrait** : Used for photographing people.
- **Landscape** : Ideal for nature and landscape.
- **Still Life** : Accurately reproduces colors for product photography.

## ● File Size / Compression

The combination of choosing a Large, Medium or Small image size along with the three added options of Fine, Normal or Basic compression gives the photographer a range of up to nine selectable image quality settings.

RAW file data can be customized and developed through the Mamiya Digital PhotoStudio Software.

Recording format	RAW	JPEG								
Image size	5328×4000 pixels	L (5328×4000pixels)			M (4096×3072pixels)			S (3008×2256pixels)		
Compression rate	—	FINE	NORMAL	BASIC	FINE	NORMAL	BASIC	FINE	NORMAL	BASIC
File size	35MB	approx. 10MB	approx. 5MB	approx. 2.5MB	approx. 6MB	approx. 3MB	approx. 1.5MB	approx. 3MB	approx. 1.5MB	approx. 0.5MB

Mamiya



**DIGITAL RE-DEFINED**



# FUNCTIONAL ELEGANCE

The Mamiya ZD camera not only incorporates new technological innovations, but also follows in the Mamiya tradition of high performance ergonomic design and sleek functional elegance.

## Camera Body Performance

The Mamiya ZD is capable of high-speed continuous shooting at 1.2fps. up to an 10 shot burst, making it the fastest 21.3 MP digital camera available today.

### Super-fast 1/4000-sec shutter

The all metal vertical-travel focal plane shutter has a top shutter speed of 1/4000th of a second for freezing high speed action.

### Magnesium alloy viewfinder cover

The top cover is made of a lightweight yet durable magnesium alloy which protects the camera's prism and electronic circuitry.

### 1.2 fps continuous shooting

Utilizing a large memory buffer coupled with the high speed processing engine, the Mamiya ZD is capable of continuously shooting at a rate of 1.2fps up to an 10 shot burst regardless of the RAW or JPEG quality setting.

### Die-cast aluminum body

The camera's body is made of a lightweight yet high strength aluminum alloy. Making the camera both lightweight and highly durable.

### LCD panel

The LCD panel makes it quick and easy for the photographer to check the status of the camera's modes and functions.

## AE Control

With five exposure modes plus Auto Bracketing and Exposure Compensation the photographer has complete exposure control in any situation. Program Shift is also available for changing shutter speeds when in Program AE mode.

### Choose from five exposure modes

Av: Aperture priority AE  
Tv: Shutter speed priority AE  
P: Program AE  
M: Manual  
X: 1/125th of a second flash sync speed

### Auto bracketing function +/-3EV exposure compensation

Auto Exposure Bracketing is available in +/- 1/3 step increments for precise exposure control.

## Auto Focus Technology

The Mamiya ZD uses a TTL Phase Difference Detection AF system which continuously searches the correct focus by using 3 points.

### Auto focus area

The photographer has the option of leaving all three AF points active or selecting one of the three points for focusing on a specific area.

### AF mode

The photographer has the option of choosing one of three focusing modes, M (Manual Focus), S (Single Shot AF) or C (Continuous Shot AF)

### AF infra-red assist

The camera automatically emits an infra-red beam in low light situations to help the auto focus system determine the distance between the camera and the subject providing accurate auto focus in every situation.

### Viewfinder information

Exposure information as well as remaining memory buffer, focus mode, frame counter and other camera features are easily seen through the camera's viewfinder.

## Full Auto TTL

The Mamiya ZD is fully compatible with the SCA 3952 system giving the photographer complete TTL operation when used in conjunction with a Metz flash unit.

### SCA 3952 compatible

Sophisticated TTL control as well as flash ready indicator in the camera's viewfinder and all other flash functions are available when using the METZ SCA (System Computer Adapter) system.

### Sophisticated TTL flash control

The light-sensitive element inside the mirror box will always make the flash control exactly.

## Magnesium Alloy Viewfinder Cover



Magnesium alloy is used to cover the camera's prism and electronic circuitry providing secure protection in a lightweight material.

## All Metal Shutter



The durable all metal vertical-travel focal plane shutter gives the camera the ability to shoot at a top shutter speed of 1/4000th of a second. It provides a flash synchronize speed of 1/125th of a second.

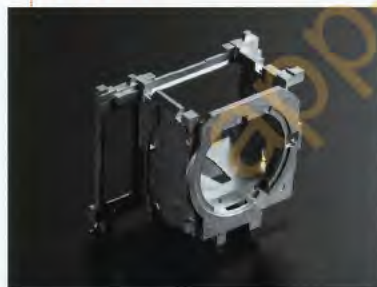
## 1.2 fps Continuous Shooting Maximum Burst Rate of 10 shots



Because of the high-speed ASIC processor and large memory buffer the Mamiya ZD is capable of firing at 1.2fps, at a maximum burst rate of 10 shots (regardless of image size).

\* The maximum burst rate decreases when releasing the shutter at 1/8sec. or slower.

## Die-cast Aluminum Body



The camera's body is made from a lightweight, high strength die cast aluminum alloy shell providing the maximum amount of protection in a lightweight material.

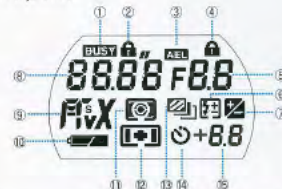
## LCD Panel

### Rear LCD panel



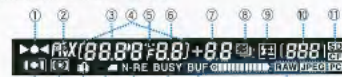
- ① ISO icon
- ② ISO sensitivity
- ③ No. of shots remaining
- ④ Data writing icon
- ⑤ Storage media icon
- ⑥ Recording format icon
- ⑦ Image size
- ⑧ Image quality
- ⑨ Custom setting
- ⑩ White balance setting

### Top LCD panel



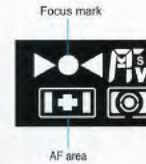
- ① BUSY icon
- ② Front dial lock icon
- ③ AE lock icon
- ④ Rear dial lock icon
- ⑤ Aperture value
- ⑥ Flash status icon
- ⑦ Exposure compensation icon
- ⑧ Shutter speed
- ⑨ Exposure mode
- ⑩ Battery level icon
- ⑪ Metering mode icon
- ⑫ AF area icon
- ⑬ Auto bracket icon
- ⑭ Self timer icon
- ⑮ Exposure compensation value

### Viewfinder information



- ① Focus mark
- ② Exposure mode icon
- ③ Shutter speed
- ④ AE lock icon
- ⑤ Dial lock icon
- ⑥ Aperture value
- ⑦ Exposure compensation value
- ⑧ Auto bracket icon
- ⑨ Flash status icon
- ⑩ No. of shots remaining
- ⑪ Storage media icon
- ⑫ AF area icon
- ⑬ Metering mode icon
- ⑭ Camera warning icon
- ⑮ Battery level icon
- ⑯ Noise reduction icon
- ⑰ BUSY icon
- ⑱ Buffer status icon
- ⑲ Recording format icon

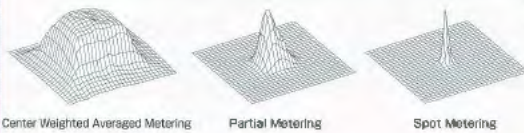
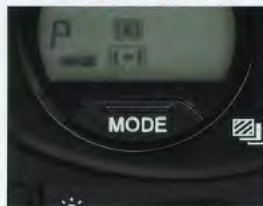
● AF Area



The camera employs TTL Phase Difference Detection AF using three auto focus points. The photographer can leave all three points active or select one of the three auto focus points for precise focusing on a specific subject.

\*The focus frames do not become red in the viewfinder.

● Metering Modes



☑ Center Weighted Average Metering

Reads the reflective average of the entire scene with the emphasis being on the center of the viewfinder.

☑ Partial Metering

Reads the light reflecting off the subject around the center of the viewfinder.

☑ Variable Ratio Metering

Automatically switches between average and partial modes depending on the relative contrast within the overall image.

☑ Spot

This mode meters only the center part of the screen, a 1.2% area of the entire image.

● AF Mode



(S) Single AF Mode

Ideal when photographing still subjects. The camera's shutter will not release unless the AF mark in the viewfinder lights and focus is confirmed. AF lock can be activated in this mode.

(C) Continuous AF Mode

Used when photographing moving subjects. In this mode the AF system continuously adjusts focus even while the shutter button is pressed.

(M) Manual Mode

Selecting this mode cancels all AF functions. The photographer focuses manually.

● AF Infra-red Beam



The camera automatically emits an infra-red beam in low light situations to assist the auto focusing system in determining the distance between the camera and subject providing accurate auto focus in every situation.

● Viewfinder



The photographer can view the camera's status such as exposure mode, shutter speed, memory buffer status and more through the camera's viewfinder.



**Versatile exposure capabilities for every situation.**

The Mamiya ZD gives the photographer the option of using one of five exposure modes depending on the situation and users preference.

**(P) Program AE**

The camera automatically determines the optimal aperture and shutter speed combination to ensure accurate exposures under ambient lighting. Program Shift is available in Program AE mode allowing the photographer to change shutter speeds.

**(Av) Aperture priority AE**

The photographer chooses the aperture and the camera sets the proper shutter speed. This mode is useful when controlling depth of field.

**Auto bracketing function**

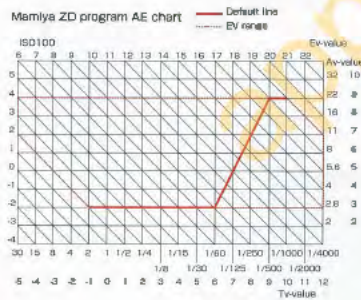
Auto Bracketing allows the photographer to shoot 2, 3, 4 or 5 photos of the same image at different exposure values in increments of +/-0.3, +/-0.5, +/-0.7, or +/-1.0 EV. When activated the AEB (Auto Exposure Bracketing) icon will blink on the LCD panel and through the viewfinder.

**(Tv) Shutter speed priority AE**

The photographer chooses the shutter speed and the camera sets the proper aperture value. This mode is useful when trying to freeze or blur action.

**+/-3EV exposure compensation function**

Exposure Compensation can be adjusted within a range of +/-3EV in 1/3 step increments. In Auto Exposure mode the compensation value is displayed in both the viewfinder and on the camera's LCD panel.



**(M) Manual**

The photographer chooses both shutter speed and aperture for complete exposure control. The shutter speeds are selected using the front camera dial and the aperture is chosen using the rear camera dial. Both shutter and aperture values can be set in 1/3 step increments. The difference between the set value and the metered value will be displayed on the LCD panel and through the camera's viewfinder with a + or - icon.

**(X) X**

This mode locks the shutter speed at 1/125th of a second to ensure flash synchronization.



**Complete control of ambient light and flash synchronization through a sophisticated TTL flash system.**

When used in combination with a Metz SCA 3002 system the Mamiya ZD is capable of full TTL flash operation as well as TTL flash exposure compensation for complete flash control operation.

**Sophisticated TTL Flash Control**

The Mamiya ZD is capable of complete TTL control through the Metz 3002 system with an SCA 3952 Adapter and a Metz flash unit. Data from the camera and flash unit are integrated and the flash head zooms to the correct field of view for optimum flash coverage depending on the focal length of the lens being used. The flash also emits an infra-red beam to assist the auto focus system in determining the distance between the camera and subject in low light situations resulting in accurate auto focus in every situation.

**Flash Exposure Compensation**



The photographer can compensate for flash exposure by simply pressing the flash exposure compensation button located on the back of the camera and turning the camera dial.



**Flash status viewfinder display**

When a Metz flash is connected to the camera the flash ready light, flash confirmation and flash compensation indicator can be seen through the camera's viewfinder for easy reference while shooting.



Using a Metz SCA 3952 Adapter provides full TTL flash control. All Metz SCA 3002 system accessories are fully compatible.



World class Mamiya optics combined with the latest image capture technology ensures superior image quality.

**AF 35mm f/3.5**



With an angle of view of 90 degrees, this wide-angle lens is approximately equivalent to a 22mm lens in 35mm format. The built-in floating mechanism provides the photographer with the ability to obtain images with high contrast and quality, from infinity to 35cm minimum focusing distance. This lens is perfect for landscapes where maximum depth-of-field is required. Furthermore the lens itself is equipped with an Auto/Manual focus switching ring, allowing one touch selection of Auto or Manual focus.

**AF 55mm f/2.8**



With an angle of view of 64 degrees, this lens is approximately equivalent to a 34mm lens in 35mm format. With minimal perspective change, it produces the most natural image of all the wide-angle lenses. A floating mechanism improves resolution at the periphery in close-ups, for image sharpness all the way out to infinity. This lens is suitable for a wide range of situations, from general photography to scenics. It is designed to provide the feel of a standard lens with a slight wide-angle effect.

**AF 80mm f/2.8**



With an angle of view of 47 degrees, this lens is approximately equivalent to a 50mm lens in 35mm format. This is the standard lens for the format, with a field of view approximating natural human sight. It is the most general-purpose lens in the series, and works well in various applications for close or distance subjects. Packing high performance into a compact, lightweight configuration, it is well corrected for distortion, producing a natural, well-balanced image.

**AF APO300mm f/4.5 IF**



With an angle of view of 14 degrees, this lens is approximately equivalent to a 182mm lens in 35mm format. Superb correction of color and spherical aberration enables a clear, high-contrast image from center to periphery. The APO design lens gives exceptional resolution along with sharp colors and tonal fidelity. The internal focusing mechanism keeps balance uniform from front to back, making this lens extremely easy to handle.

**Zoom AF 55-110mm f/4.5**



With an angle of view ranging from 65 to 35 degrees, combined with auto-focus and zoom capability, this lens can serve triple duty over the focal lengths of wide/normal/portrait and is equivalent to 34-68mm in the 35mm format. Internal focusing eliminates the risk of vignetting when combined with front-element filters, and a unique "flower" design lens hood prevents stray reflections from striking the lens surface.

	WIDE Angle			STANDARD	TELEPHOTO
	AF 35mm f/3.5	AF 45mm f/2.8	AF 55mm f/2.8	AF 80mm f/2.8	AF 150mm f/3.5
Optical Construction	9 elements 7 groups	9 elements 7 groups	9 elements 6 groups	6 elements 5 groups	5 elements 5 groups
Angle of View	90°	74°	64°	47°	26°
Minimum aperture	22	22	22	22	32
Diaphragm	Automatic	Automatic	Automatic	Automatic	Automatic
Focusing System	Auto / Manual	Auto / Manual	Auto / Manual	Auto / Manual	Auto / Manual
Minimum Focusing Distance(from CCD)	35cm	45cm	45cm	70cm	150cm
Maximum Magnification Ratio	0.166	0.13	0.18	0.15	0.12
Area Covered	274×375mm	310×418mm	226×305mm	279×377mm	341×461mm
Equivalent Focal Length for 35mm	22mm	29mm	34mm	50mm	93mm
Filter Diameter	77mm	67mm	58mm	58mm	58mm
Lens Hood	Bayonet	Bayonet	Bayonet	Bayonet	Bayonet
Dimensions(length×diameter)	62×64mm	73.5×77mm	66.5×77mm	49.5×77mm	80.6×78mm
Weight	490g	495g	435g	300g	540g
Equivalent focal length for 6×4.5 when mounted on ZD	41mm	52mm	61mm	92mm	174mm
Equivalent focal length for 35mm when mounted on ZD	25mm	32mm	40mm	58mm	108mm

Mamiya auto focus lenses have been designed and manufactured to provide the ultimate in accurate color rendition, contrast, tonality and resolution. Their world-class optical technology maximizes the full potential of the 22 mega-pixel sensor incorporated within the Mamiya ZD.

\*The actual focal length of the Mamiya AF lenses increases by a factor of 1.16 when used on the Mamiya ZD.

**AF 45mm f/2.8**



With an angle of view of 74 degrees, this lens is approximately equivalent to a 29mm lens in 35mm format. Its wide angle of view and depth of field makes the lens appropriate for any situation, from snapshots to scenics. Low-dispersion glass minimizes chromatic aberration. A floating mechanism lends uniformity to image resolution, from center to periphery. This lens is also suitable to architectural photography and other subjects dominated by straight lines, and it offers sharp and crisp image rendering.

**AF 150mm f/3.5**



This medium telephoto lens has a 26 degree angle of view, approximately equivalent to a 93mm lens in the 35mm format, a focal length perfect for portraits or scenery combined with a compact configuration for general versatility. This is the first AF medium telephoto lens, that offers a quick select ring for auto or manual focus. The ring does not rotate in AF mode, to assure focusing accuracy.

**AF ULD 210mm f/4 IF**



With an angle of view of 19 degrees, this lens is approximately equivalent to a 128mm lens in 35mm format. Its natural focusing effect suppresses the compression typical of telephotos while still isolating the subject. Excellent for a wide range of situations, and particularly for portraits, landscapes or general photography. Super low-dispersion glass assures good contrast even for close-ups. The internal focusing mechanism makes handling easier, with no change in the balance between overall lens length and weight.

**Zoom AF ULD 105-210mm f/4.5**



With an angle of view ranging from 36 to 19 degrees, equivalent to the 65-130mm focal lengths in the 35mm format, this medium-telephoto zoom lens has the reach to capture distant subjects and the versatility to work in close when needed. It is an ideal choice for all-purpose photography. Low dispersion glass lens elements provide excellent resolution of fine detail. The internal focusing mechanism allows use of front filters with no degradation of image quality.

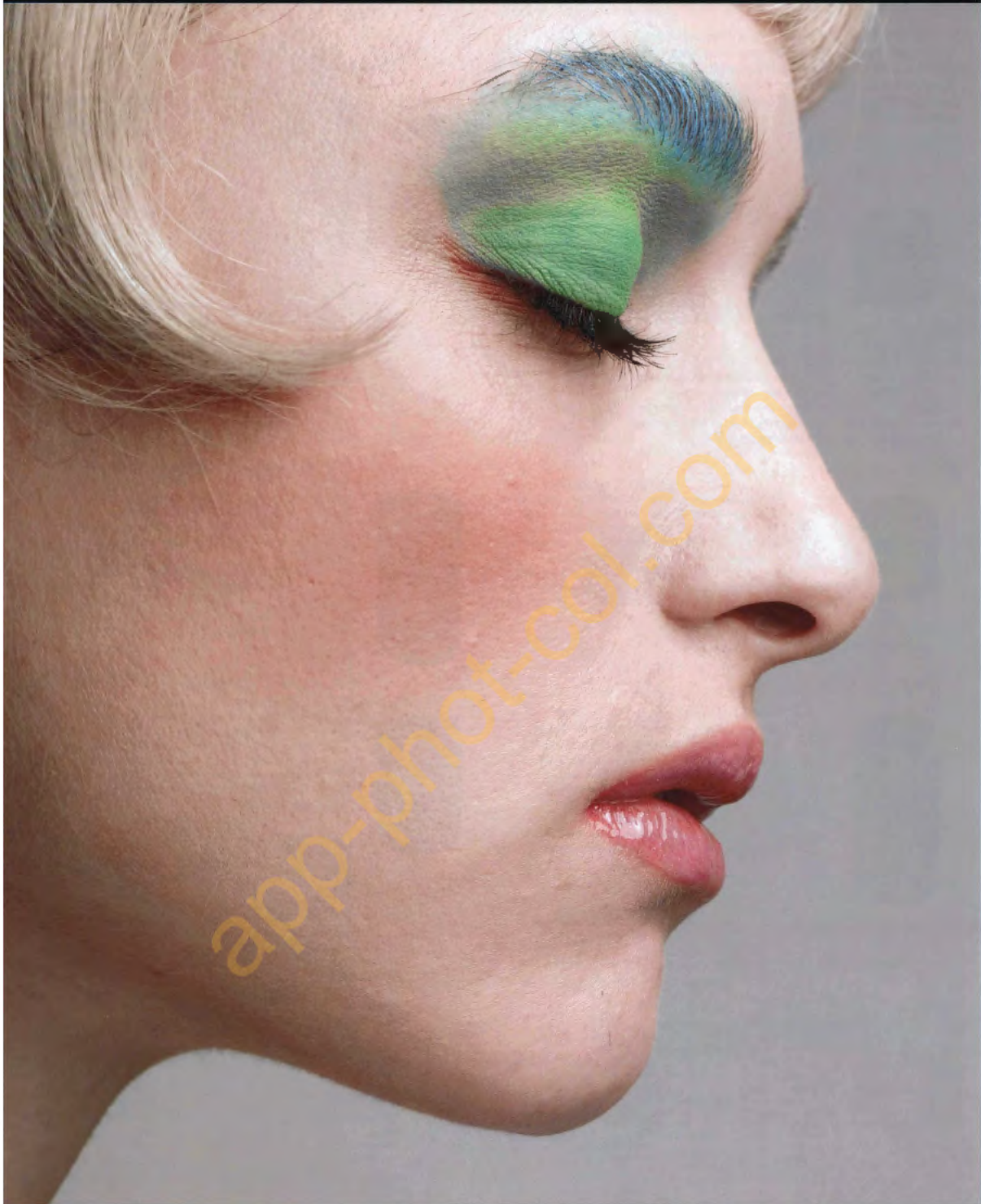
**Macro MF 120mm f/4**



With an angle of view of 33 degrees this versatile lens offers the perspective of a 73mm focal length in the 35mm format, ideal for portraiture, landscapes or general photography. Pinpoint sharpness with manual focus is assured from infinity to 1:1 magnification by a green diode in the finder providing focus confirmation. Lens elements of anomalous dispersion glass equalling APO lens performance in terms of contrast, resolution and correction of color aberrations is utilized for superior image reproduction. A floating mechanism assures uniform sharpness from center to the corners.

		ZOOM		MACRO	
<b>AF ULD 210mm f/4 IF</b>	<b>AF APO 300mm f/4.5 IF</b>	<b>Zoom AF 55-110mm f/4.5</b>	<b>Zoom AF ULD 105-210mm f/4.5</b>	<b>Macro MF 120mm f/4</b>	
7 elements 5 groups	8 elements 8 groups	11 elements 10 groups	13 elements 11 groups	9 elements 8 groups	
19°	14°	65°~35°	36°~19°	33°	
32	32	32	32	32	
Automatic	Automatic	Automatic	Automatic	Automatic	
Auto / Manual	Auto / Manual	Auto / Manual	Auto / Manual	Manual	
200cm	300cm	150cm	150cm	40cm	
0.13	0.11	0.04~0.08	0.09~0.18	1.00	
322x448mm	371x500mm	55mm:988x1331mm • 110mm:520x702mm	105mm:441x685mm • 210mm:230x312mm	42x56mm	
128mm	182mm	34~68mm	65~130mm	73mm	
58mm	77mm	87mm	58mm	87mm	
Built-in	Built-in	Bayonet	Bayonet	Bayonet	
141x66mm	213x98mm	110x86.6mm	158x82mm	111x63mm	
750g	1,430g	870g	890g	845g	
24.4mm	34.0mm	64 • 103mm	102~244mm	130mm	
151mm	216mm	40~79mm	76~151mm	87mm	

Mamiya



**DIGITAL RE-DEFINED**



Shooting and capturing the image is not the end of the digital process. Today's photographer demands the power of the "Digital Darkroom" to view and process digital files. Mamiya's Digital PhotoStudio software provides the photographer with the power and tools to view, edit and process digital files captured with the Mamiya ZD camera.

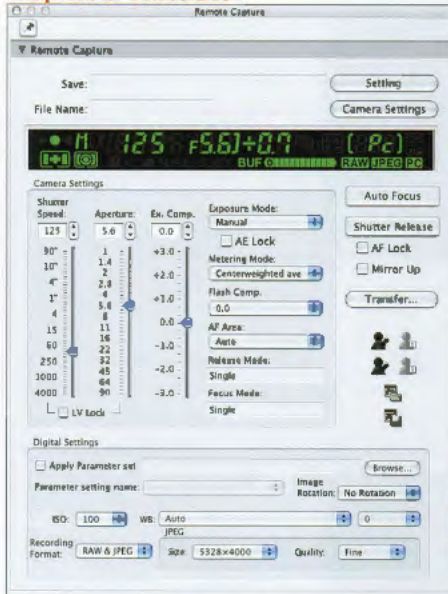


## Versatility and Simplicity are at your finger tips

From the moment of image capture to the editing and processing work flow, all the control you would expect awaits you at your key board. Aperture, shutter speed, exposure and shutter release are at your command.

Connected to your computer via an IEEE1394 cable, the Mamiya ZD is ready for your decisive moment.

### Capture Window



Connected to your computer (MAC or PC) via IEEE1394, the Mamiya ZD can be completely controlled by the Mamiya Digital PhotoStudio. Functions and information such as AF mode, exposure compensation, aperture, shutter speed, ISO, white balance, metering mode and more are all displayed and controlled on screen.

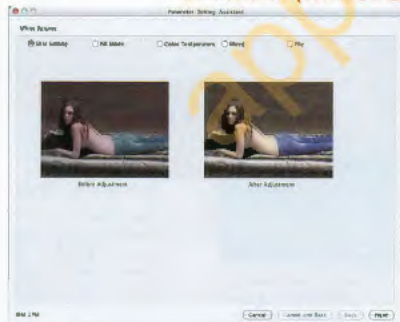
### Preview Window

Compare and preview selected images for sharpness, color balance or exposure. RAW files can be viewed before and after processing.



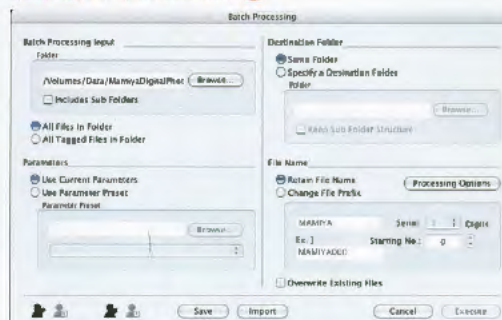
# Mamiya Digital PhotoStudio

### Parameter Setting Assistant (MAC) or Wizard (Windows)



Select and set RAW file processing parameters such as white balance, color balance and sharpness easily and re-apply to future files as needed. Preview your processing parameters before and after they have been applied for quick evaluations and comparison.

### Batch Processing



Select multiple image files in specific folders and apply processing parameters and custom settings automatically, such as sharpness and color balance. With one click of the mouse process entire image folders fast and consistently.

## Window Palette

Select and configure your most used windows and store them for quick use in the windows palette. Simply select which windows to save and drag them into the windows Palette.



## Thumbnail Window

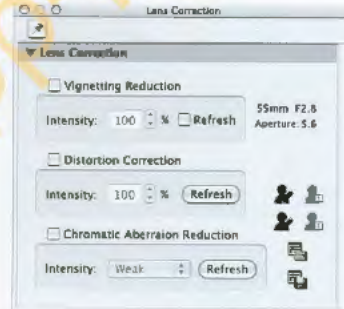
Thumbnail images can be displayed and reviewed for possible image enhancement or processing. Thumbnail images can be displayed with size ranging from 120x120 up to 640x640.

## Process Preview



Images can be evaluated for detail and sharpness in selected image areas. Zoom in or out from 50% to 200% with image size ranging from 240x320 to 960x1260 pixels.

## Lens Correction



In spite of advance optical lens technology unfortunately all lenses continue to have optical limitations such as vignetting, distortion and chromatic aberration. It is possible to correct these phenomena in post processing using the Lens Correction feature in the Mamiya Digital PhotoStudio software.

## Tool Palette

The Tool Palette provides all the necessary tools for image editing and processing. Choose and customize your favorite tools for quick and easy future use.



## Browsing & Retouching

The Mamiya Digital PhotoStudio enables the photographer to browse, edit and display several images at the same time, it is very useful for comparative reviews on one screen.

## Other Functions

- White balance
- Tonal Curve/Histogram
- Unsharp mask
- Color balance
- Noise reduction
- Navigation
- Image information
- Image comparison
- Highlight/Shadow warning

## Mamiya Digital PhotoStudio System Requirements

OS	Mac	Mac OS X 10.2 or later
	Windows	Windows2000/Windows XP
CPU	Mac	Power Mac G4/Power Mac G5
	Windows	Pentium4 2.40Ghz or later (to require 64MB)
Display		1024 x 768 24bit or higher
Memory		256MB or higher (1GB or higher is recommended)
Hard Drive		Hard Drive space 256MB or higher

## Parameter Presets



RAW data processing parameters and development curves can be easily stored for quick future use on other RAW files.

## Parts name



## Easy access to a variety of functions and a selection of fine adjustment support every photographer's workflow

### LCD menu Shooting menu



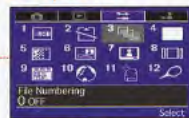
Exposure functions such as image quality, white balance, pre-sets and sharpness can easily be selected.

### Playback menu



This menu includes play back modes, delete options, zoom display, under/over exposure warning settings, screen brightness selection and more.

### Set up menu



Camera Set-up mode provides selection of color space, noise reduction, language selection, card formatting and much more.

### Custom setting menu



All Custom Functions can be accessed through this screen such as program shift, AF Infra Red assist selection, 1/2 or 1/3 f-stop increments and many more.

### Self-timer shooting function

The camera dial is used to change the initial default of the self-timer function from 10 seconds within a range of 2 - 60 seconds. The self-timer function is useful when taking a portrait with the photographer in the photo, when shooting in mirror-up mode or when taking long exposures without an electro magnetic cable release.



### Depth of field preview

The photographer has the ability to view the depth of field when pressing the Preview Button and looking through the camera's viewfinder. The viewfinder will look considerably darker at higher f-stop settings.

### Mirror up shooting function

The Mirror-Up function eliminates camera vibration when shooting long time exposures or at a very slow shutter speed. A tripod is recommended whenever using Mirror-Up mode.

### Diopter function

The camera's built-in diopter enables the photographer to adjust the diopter within a range of -2.5 to +0.5. Diopter lenses are available as an optional accessory to extend the range to -5.2 to +3.

### Eyepiece shutter

The camera has an eyepiece shutter that protects the meter from stray light that may be entering the camera from behind when not looking through the viewfinder. Light entering the camera's meter through the rear viewfinder could cause erroneous meter readings.

### Interchangeable focusing screens

Selecting a focusing screen that suits a particular need is possible with the Mamiya ZD. Each screen comes with a tweezers to make installation quick and easy.

Mamiya



**DIGITAL RE-DEFINED**

## ● Magnifier FD301



This eyepiece magnifies the central portion of the viewfinder for precise focusing when photographing Macro or Telephotography. It can be flipped to the left out of the way for confirming subject composition without removing it from the eyepiece.  
Weight/62g(2.2oz.)

## ● Angle Viewfinder FA301



The Angle Viewfinder can be rotated complete 360 degrees which gives the photographer complete comfort at any angle. Especially useful when shooting Macro photography or when the photographer has to shoot from a low angle of view.  
Weight/147g(5oz.)

## ● Cable Release RE401/RE402



Electromagnetically fires the shutter for vibration free operation. These cables are very useful when shooting in mirror-up mode or when the photographer needs to physically be away from the camera. RE401 comes with a 1-meter (3 feet) spiral cord. RE402 comes with a 5-meter (16 feet) straight cord.  
Weight/RE401:50g(1.8oz.)  
RE402:80g(2.8oz.)

## ● SCA3952 Adapter



When used with the SCA 3002 TTL system, this adapter makes it possible for complete TTL flash photography when using a Metz flash unit. It also has a power zoom function that automatically matches the focal length of the lens being used for optimum flash coverage.  
Weight/38g(1.3oz.)

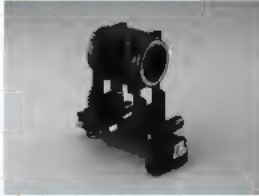
## ● IR Cut Filter YB301/Low-Pass Filter YC301



**IR cut filter**  
The IR Cut Filter is used to eliminate unwanted infra-red light from reaching the sensor.  
Weight/25g (only filter)

**Low-pass filter**  
The Low-Pass Filter eliminates moiré effect as well as certain types of chromatic aberrations and that can occur in digital photography.  
Weight/26g (only filter)

## ● Auto Bellows NC401



This high precision macro accessory allows continuous adjustment of magnification ratio for precise manual focusing when shooting macro photography. The magnification ratio is 0.75 to 2.20x with an AF 80mm f2.8 lens. The lens diaphragm data is transferred through a cable to the camera's lens mount which enables the full use of Aperture Priority AE mode or Exposure Compensation in Manual mode.

When attaching an 80mm f2.8 lens in conjunction with a lens reversing ring, reproduction magnification can be achieved at a ratio of 1:1 or greater with minimal aberration. The camera mount rotates 90 degrees for easy selection of vertical / horizontal composition. The upper and lower rails can also be used in combination at a right angle, enabling the bellows to shift horizontally for reproduction of vertical images at the same magnification.  
Weight/1,340g(47oz.)

## ● Remote Control Set RS402



Using a proprietary infra-red impulse beam, the Remote Control Set takes full advantage of the automated features available in the Mamiya ZD. The infra-red signal is transmitted to the receiver which is attached to the camera for wireless operation up to 100ft. outdoors.

Power Source:  
Transmitter: Two AA-size alkaline batteries  
Receiver: one S-006 9V zinc-carbon battery  
Weight:  
Transmitter: 130g(4.6oz.) (without batteries)  
Receiver: 140g(5oz.) (without batteries)

## ● Lithium-Ion Battery BA701/Battery Charger DE975A



The camera is powered by one lithium-ion battery. Two batteries can be charged at the same time using the Battery Charger.  
Weight/Battery:100g (3.5 oz) , Battery charger:170g (6 oz) (includes AC cord)

## ● Bundled items



The following original accessories and manuals are included in the packaging of the Mamiya ZD.

- ① Mamiya Digital PhotoStudio set up guide
- ② Mamiya ZD manual
- ③ Mamiya Digital PhotoStudio manual
- ④ Strap
- ⑤ Mamiya Digital PhotoStudio application CD
- ⑥ IEEE1394 cable (4.5m)
- ⑦ Guide plate for filter cartridge
- ⑧ IR cut filter cartridge
- ⑨ Battery charger
- ⑩ Battery
- ⑪ AC Cord for Battery charger

### Flash connection



SCA3952 Adapter

SCA3008 system flash

OR



SCA3952 Adapter

SCA3009C

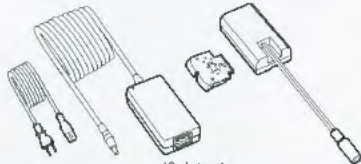
SCA300 system flash

### Power source



Battery charger DE975A

Lithium-ion Battery BA701



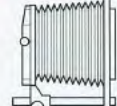
AC adapter set PA301

### Strap



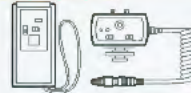
Neck Strap CN402

### Hood



Bellows lens hood

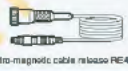
### Remote control equipment



Remote control set RS402



Electro-magnetic cable release RC401 (1m)



Electro-magnetic cable release RC402 (5m)

### Viewfinder · Filter



Eye cup AE301



Magnifier FC301



Angle viewfinder FA301

Diopter lenses



DE306 (for cheaterhood) (-5~-2)



DE301 (standard) (-2.5~+0.5)



DE308 (for farighted) (W~+3)

Focusing screen



Type A SA301 (matte)



Type A4 SD301 (checker)

Filter



Lowpass filter YC301



IR cut filter YB301

## Mamiya ZD System



Mamiya ZD

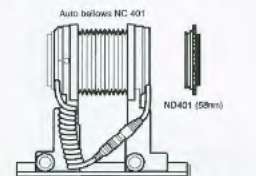
### Close-up equipment



NA401 (No.1)

NA402 (No.2)

NA408 (No.3)



Auto bellows NC 401

ND401 (58mm)

with reverse ring ND401 (58mm)

### Lenses



For AF 35mm F3.5



For AF 45mm F2.8



For AF 55mm F2.8



For AF 80mm F2.8



For AF 150mm F3.5



AF 35mm F3.5



AF 45mm F2.8



AF 55mm F2.8



AF 80mm F2.8



AF 150mm F3.5



AF ULD 210mm F4.5



AF APD 300mm F4.5



For Zoom AF 55-110mm F4.5



For Zoom AF ULD 105-210mm F4.5



For Macro MF 120mm F4



Zoom AF 55-110mm F4.5



Zoom AF ULD 105-210mm F4.5



Macro MF 120mm F4

Wide-angle

Standard

Telephoto

Zoom

Macro

Mamiya 645 NON-AF lenses are compatible with focus aid, in manual mode.

\* Specifications and features are subject to change without notice.



## Mamiya ZD Specifications

Camera Type	AF single-lens reflex digital camera
Image sensor	48mm×38mm full-frame transfer CCD
Aspect ratio	4 : 3
Total pixels	21.7-Mega pixels
Effective pixels	21.3-Mega pixels
Lens mount	Mamiya 645AF mount
Lens conversion factor	1.16x focal length
A/D conversion	14bit conversion, 12bit recording
ISO sensitivity	ISO50~400 (1/3steps)
Recording format	RAW/JPEG (Exif 2.2 compliant), simultaneous RAW&JPEG
Image quality mode	JPEG: L (5328×4000pixels), M (4096×3072pixels), S (3008×2256pixels)
File size	RAW: approx 35MB (5328×4000pixels) without compression JPEG: L: Fine approx 10MB, L: Normal approx 5MB, L: Basic approx 2.5MB JPEG: M: Fine approx 6MB, M: Normal approx 3MB, M: Basic approx 1.5MB JPEG: S: Fine approx 3MB, S: Normal approx 1.5MB, S: Basic approx 0.8MB <small>* The size may differ depending on ISO sensitivity and subject.</small>
Shooting intervals	1.2fps (burst rate: 10shots) * The maximum burst rate decreases when releasing the shutter at 1/8sec. or slower.
Color space	Adobe RGB, sRGB
White balance	Auto, Daylight, Overcast, Shade, Fluorescent, Tungsten, Color temperature, Preset 1, Preset 2, each with fine adjustment
Memory card	SD card, Compact flash card (Type I & II) (over 256MB)
LCD monitor	1.8inch low-temperature polysilicon thin-film transistor LCD w/back light (Field of view : 100%)
Playback function	Zoom (4x, 9x, or 16x), Histogram & data, Highlight & Shadow warning
Erasing function	Selected image, selected folder, entire card
Language	Japanese/ English/ German/ French/ Spanish
Video Out	NTSC / PAL
Computer connection	IEEE 1394 (4pins) cable
Filter	Cartridge type interchangeable filter, IR cut filter (standard), Low-pass filter (option)
Finder	Eye-level pentaprism finder with built-in eyepiece shutter & diopter adjustment (— 2 to 0.5 dpt), Eye point : 15mm
Finder magnification	0.75x (80mm F2.8 Lens at ∞ & -0.8 dpt)
Field of view	98% of actual
Focusing screen	Interchangeable, Matte (standard), Checker (option)
Auto focus	TTL phase-difference-detection system, 3 focusing areas
AF area selection	Auto, single (selectable from 3 areas)
AF mode	Focus mode: Single (S), Continuous (C), Manual (M), Focus lock is possible
AF assist beam	Built-in infra-red beam
Exposure control	Aperture priority AE (Av), Shutter speed priority AE (Tv), Program AE (P) w/shift function, Manual (M), X, Bulb (B) *Selectable 1/3 or 1/2 step
AE lock	Possible with AE lock button
Metering mode	Centerweighted Average, Partial, Spot, Variable ratio
Metering range	EV2~EV19 with 80mm F2.8 Lens at ISO100 (EV5~EV19 when spot metering)
Shutter	Electronically controlled vertical-travel metal focal-plane shutter Shutter speed: 30sec.~1/4000sec., Flash sync. speed: 1/125sec. (selectable 1st or 2nd curtain sync.)
Flash sync. connection	Hot shoe, Sync. terminal
Mirror	Quick return
Mirror up	Electronic with mirror up button
Release mode	Lock(L), Single(S), Self timer(SELF) *Self timer can be set from 2sec. to 60sec. (10sec. increments over 10sec.)
Preview	Automatic return (aperture can be changed during preview)
Remote triggering	Electro-magnetic cable release (RE401&RE402), Remote control set (RS402) are compatible
Custom setting	31 settings
Auto bracket	Number of shots (2,3 or 5), Release mode (continuous or single), Range (±1/3, ±1/2, ±2/3 or ±1EV) are selectable
Exposure compensation	±3EV with increments of 1/3, 1/2, 1/1 steps (expandable up to ±5EV by custom setting)
Tripod socket	1/4-20 and 3/8 female threaded mount
Power supply	Lithium-Ion rechargeable battery BA701 (7.2V-DC 1700mAh), AC adapter PA301 (option)
Battery check	Indicator of remaining battery level on LCD
Dimension	161.5mm (W)×152mm (H)×90.8mm (D), 6.4"(W)×6"(H)×3.6"(D)
Weight	1300g (camera only) battery 100g, 2.67lb (camera only) battery 3.5 oz
Working condition	Working temperature : 0°C~40°C (32°F~104°F), Working relative humidity : 75% or less

\*Specifications are subject to change without notice for quality improvement.

† Despite this precision technologies with which it is made, the LCD monitor may exhibit dead or light (white) pixels.

‡ All pictures in this catalogue were taken with the Mamiya ZD and were processed with the Mamiya Digital PhotoStudio.

§ Microsoft, Windows and/or other Microsoft products are either trademarks or registered trademarks of Microsoft Corporation in the United States and/or other countries.

¶ Apple, Macintosh, Power Macintosh, Mac OS X and/or other Apple Computer products are registered trademarks of Apple Computer incorporated in the United States and/or other countries.

‡ Pentium is a trade mark of Intel Corporation.

§ Adobe, the Adobe logo and Reader are either trademarks or registered trademarks of Adobe Systems Incorporated in the United States and/or other countries.

¶ Compact flash is a trade mark or a registered trademark of Sandisk Corporation in the United States and/or other countries.

‡ All other trademarks and logos are the property of the respective owners.



app-phot-col.com

Printed in Japan

01ZD 8112

(EN)